

# Arkscan®

[www.arkscan.com](http://www.arkscan.com)

**AS10**  
**Mobile NFC Reader**

**User's Manual**

V 1.5

2015 / 8 / 7

# - Table of Contents -

<b>1. Introduction.....</b>	<b>4</b>
1-1. Product Features.....	4
1-2. Package Contents .....	5
1-3. Product Characteristics and Specifications.....	5
1-3-1. NFC Tags Supported by the AS10 .....	5
1-3-2. AS10 Product Specifications .....	6
1-3-3. AS10 Indicator Lights and Sounds.....	7
1-4. Operating Instructions.....	8
1-4-1. Power Up.....	8
1-4-2. Shut Down.....	8
1-4-3. Connecting to a PC/ Notebook.....	9
1-4-4. Connecting to an Apple iOS Device .....	12
1-4-5. Connecting to an Android Device.....	15
1-4-6. Reading NFC Tags .....	18
1-4-7. Clearing the Bluetooth Pairing Record.....	19
1-4-8. Storing/Deleting Memory Data.....	20
<b>2. Configuration Mode .....</b>	<b>24</b>
2-1. Entering Configuration Mode .....	24
2-2. Canceling / Exiting Configuration Mode .....	25
<b>3. Operating the MARSON RFID Utility .....</b>	<b>26</b>
3-1. Introduction to Main Window.....	26
<b>4. RFID Parameters Setup.....</b>	<b>28</b>
4-1. Operation Mode .....	28
4-2. Tag Info.....	29
4-3. Session Time and Delay Time.....	30
4-3-1. Session Time Operation Method .....	30
4-3-2. Delay Time Operation Method .....	30
4-4. Select Tag Category.....	30
4-5. Data Output Format .....	31
4-5-1. Time Log.....	32
4-5-1-1. Configure whether to output Time Log's Caption "Time Log":.....	32
4-5-2. Tag Name.....	32
4-5-2-1. Configure whether to output Tag Name's caption "Tag Name":.....	32
4-5-3-1. Configure whether to output AFI caption "AFI" .....	33
4-5-4. DSFID Data.....	33
4-5-4-1. Configure whether to output DSFID's caption "DSFID" .....	33
4-5-5. UID Data .....	33
4-5-5-1. Configure whether to output UID caption "UID" .....	33
4-5-6. Data Block Output .....	34
4-5-7. No Tag Message.....	34
<b>5. Other Parameters Setup .....</b>	<b>35</b>
5-1. Date Format.....	35
5-2. Time Format.....	36
5-3. Communication Interface .....	37
5-3-1. Establish Connection with Wireless Dongle .....	38
5-3-2. Disconnect from Wireless Dongle .....	39
5-3-3. Clear All Pairing Records on Wireless Dongle.....	39
5-4. Memory Communication Interface Options .....	39
5-4-1. Field Separator .....	39

5-4-2. Storage Sequence .....	40
5-5. BT-HID and BT-SPP Communication Interface Options .....	40
5-5-1. BT-ID .....	40
5-5-2. Host MAC Address .....	40
5-5-3. BT-Pin-Code .....	40
5-6. USB-HID and BT-HID Communication Interface Options.....	41
5-6-1. Keyboard Layout.....	41
5-6-2. Key Numeric .....	41
5-6-3. Key Caps Lock .....	41
5-6-4. Inter-black Interval Time .....	42
5-6-5. Inter-character Interval Time .....	42
5-7. Data Terminator.....	43
5-8. Sleep Mode / Timer .....	43
5-8-1. Enter Sleep Mode .....	43
5-8-2. Timer of Sleep Mode.....	43
5-9. Buzzer .....	44
5-9-1. Beep Tone.....	44
5-9-2. Beep Time .....	44
5-10. Vibrator .....	44
5-11. Waiting Time .....	45
5-12. System Time .....	45
<b>6. Additional Functions .....</b>	<b>46</b>
6-1. System .....	46
6-2. Operation.....	48
6-3. Tools .....	49
6-3-1. Memory.....	49
<b>7. Updating Firmware on MR10A7.....</b>	<b>52</b>
7-1. Entering Firmware Update Mode.....	52
7-2. Executing Firmware Update .....	53

# 1. Introduction

The AS10 is a Wireless NFC Reader that uses Bluetooth as the communication interface. It can quickly connect with computers, mobile phones, tablets, etc. through the Human Interface Device (HID), without installing additional device drivers, and can complete an array of operations by integrating its Apps with the Cloud. With a streamlined contemporary styling and a fresh, simple, two colour design, it is ergonomic and easily fits in one hand. With an IP55 dust and water protection rating and a 1.5 meter fall-protection rating, it is also suitable for prolonged use outdoors and in various harsh environments. The AS10 has a 1000mAh internal battery and 2MB of internal memory, enough for 10,000 online/offline scans. It can also read from the entire lineup of high frequency RFID NFC chips (ISO14443A, ISO14443B, ISO15693), including wireless key cards, debit cards, and the commonly seen EasyCard.

## 1-1. Product Features

### Light and Easy to Carry

Using Bluetooth as the communication interface, the AS10 avoids wiring limitations and enables users to transfer and sync data without changing their work style. Weighing in at just 70g, the product is easily held in one hand and is shaped ergonomically.

### Novel Exterior Design

The two-colour exterior design is fresh, simple and clean. The unibody plastic shell is curved, fashionably shaped, and in harmony with mobile phones and tablet usage.

### Industry Level Protection

The AS10 is an RFID Wireless Reader featuring IP55 dust and water protection rating and a 1.5 meter fall protection rating. It is suitable for prolonged use outdoors or in extremely harsh environments.

### High Performance Reading

The AS10 can read all RFID high frequency chipsets (ISO1443A, ISO1443B, ISO15693 and NFC), including wireless key cards, debit cards, and the often-seen EasyCard

### Excellent Compatibility

Featuring Secure Simple Pairing (SSP), the AS10 is compatible with the various mobile phones and tablets in the market. The user simply taps on the screen to connect via Bluetooth Human Interface Device (HID) — no pincode required.

### Long Battery Life

The 1000mA internal lithium battery powers up to 10,000 scans on a full charge, eliminating the need for frequent battery changes, ensuring employee efficiency.

### Human Centred Design

Streamlined, simple button and indicator light design saves users from spending time fumbling. The unique mode indicator light and vibrator communicates read status to the user even in noisy surroundings. A detachable hand strap is also included, so the device may be tied to the waist or hung on the neck, making it easy to reach for anytime use, and hard to lose.

## 1-2. Package Contents

Each AS10 package includes the following items:

1. AS10 Wireless NFC Reader
2. One (1) Hand Strap
3. One (1) Micro USB cable

## 1-3. Product Characteristics and Specifications

### 1-3-1. NFC Tags Supported by the AS10

The AS10 can scan the entire series of high frequency NFC tags, including those supporting NFC standards like ISO14443A, ISO14443B, ISO15693, etc. Common NFC tags are listed in Table 1-1\*.

Standard	Tag name
<b>ISO14443A</b>	Mifare S-70
	Mifare S-50
	Mifare Ultralight
	Mifare DesFire (MF3)
	SLE66R35 (M-Classic)
<b>ISO14443B</b>	SRIX512
	SRIX4K
<b>ISO15693</b>	I-Code SLI
	Ti2048 (Plus)
	Ti256 (Standard)
	SRF55V10P (EM)
	Advant ATC1024
<b>Others</b>	Topaz 96/ 512
	Felica
	Felica Lite
	NTAG 203/ 215/ 216

**Table 1-1:** NFC Tags supported by the AS10

\* The contents of this table are subject to change, without notice, following technical development.

## 1-3-2. AS10 Product Specifications

Performance	
Frequency	13.56MHz
Standard	ISO 15693 ISO 14443
Memory	2 MB
Read Mode	Single read
Reading Distance	ISO 14443: 0~25mm
	ISO 15693: 0~50mm
Physical Characteristics	
Dimension	W42.5×L102×H21.5 mm
Weight	70g
Color	White
Material	PC
Cable	1.5 M (Micro USB cable)
Trigger	Scan Button, iOS Hotkey
Indicator	Buzzer, LED, Vibrator
Power	
Operation Voltage	3.7 VDC
Working Current	< 250mA
Standby Current	< 75mA
Idle Current	< 1mA
Surge Current	< 700mA
Battery	3.7V, 1000mAh, Lithium Battery
Number of Scan (per full charge)	> 10,000 scans (1 scan/ 5 secs, Bluetooth connected)
Connectivity	
Radio	Bluetooth 2.1 + EDR (Class2)
Range	10m (line of sight)
Interface/ Profile	BT (SPP) BT (HID) USB (HID) USB (VCP)
User Environment	
Operating Temperature	-10~50°C
Storage Temperature	-20~60°C
Humidity	0%~95%RH (Non-condensing)
Drop Durability	1.5M
Sealing	IP55
Regulatory	
ESD	Functional after 4KV contact, 8KV air discharge
EMC	CE, FCC
Safety	RoHS 2.0, WEEE

Table 1-2: AS10 Specifications

### 1-3-3. AS10 Indicator Lights and Sounds

AS10's LED indicators use three colours: blue, green and red, as per Figure 1-1. In combination with the buzzer they indicate different conditions, in Configuration Mode.

Status	Blue LED	Green LED	Red LED	Beeper
Power up			lits 1 second	1 long beep
Good Read		lits 1 second		1 short beep*
Bluetooth Disconnected (Discoverable)	flashing			
Bluetooth Connected		2 flashes		2 short beeps
Deletes Pairing Record				2 short beeps
Data Transfer Failure (Offline)		lits 1 second		3 short beeps
Data Storage Failure (Memory Full)		1 flash		3 short beeps
Enters Configuration Mode		stays on		2 short beeps
Exits Configuration Mode				2 short beeps
Low Power			flashing	
Charging			stays on	

**Table 1-3:** MR10A7's LED Indicators and Beeper

\*Please refer to **5-9-2. Beep Time** for beep length configuration.

## 1-4. Operating Instructions

### 1-4-1. Power Up

Press the Trigger Button for 2 seconds without releasing, as per Figure 1-1. The unit will emit one (1) long beep and light the LED red. When the sound then stops and the light goes off, the reader successfully powers up.

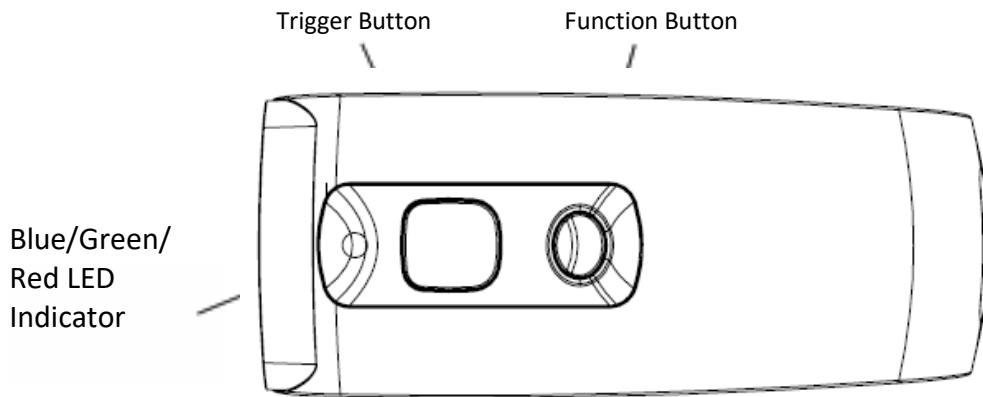


Figure 1-1: Trigger Button and Function Button positions

### 1-4-2. Shut Down

#### Method 1:

By default, the unit shuts down automatically after 5 minutes of inactivity. To adjust the auto power-off timeout, please refer to Chapter 5-8. **Enter Sleep Mode / Timer**

#### Method 2:

Using a needle or paper clip, press the Reset Button located at the bottom of the AS10 once, as per Figure 1-2. This will force a shut down.

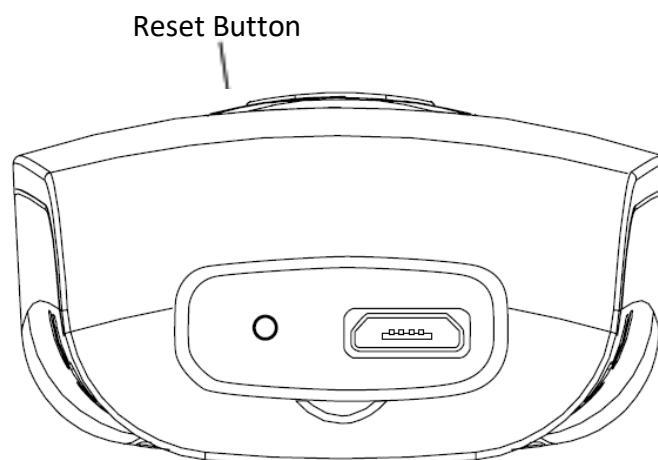


Figure 1-2: Reset Button position



### 1-4-3. Connecting to a PC/ Notebook

#### Step 1:

Press and hold the Trigger Button for 2 seconds to power up the unit, after which the blue indicator LED will flash continuously. (If the blue LED does not flash, it means the unit is not currently in Bluetooth Mode. Please refer to Section **5-3. Communication Interface**, and change the Communication Interface to BT-HID.)

#### Step 2:

Enter the PC/Notebook's Bluetooth application, as per Figure 1-3, and click *Add a Device*.

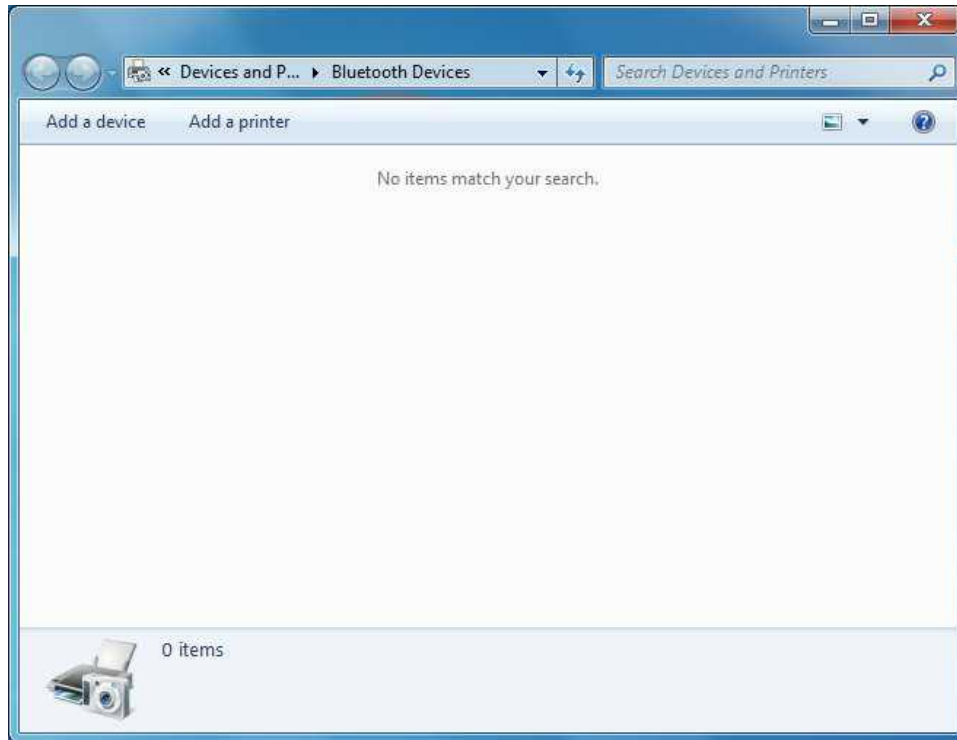


Figure 1-3: PC/NB Bluetooth application Main Window

**Step 3:**

In the Add a device window, double click **HF RFID Reader** to connect, as per Figure 1-4.

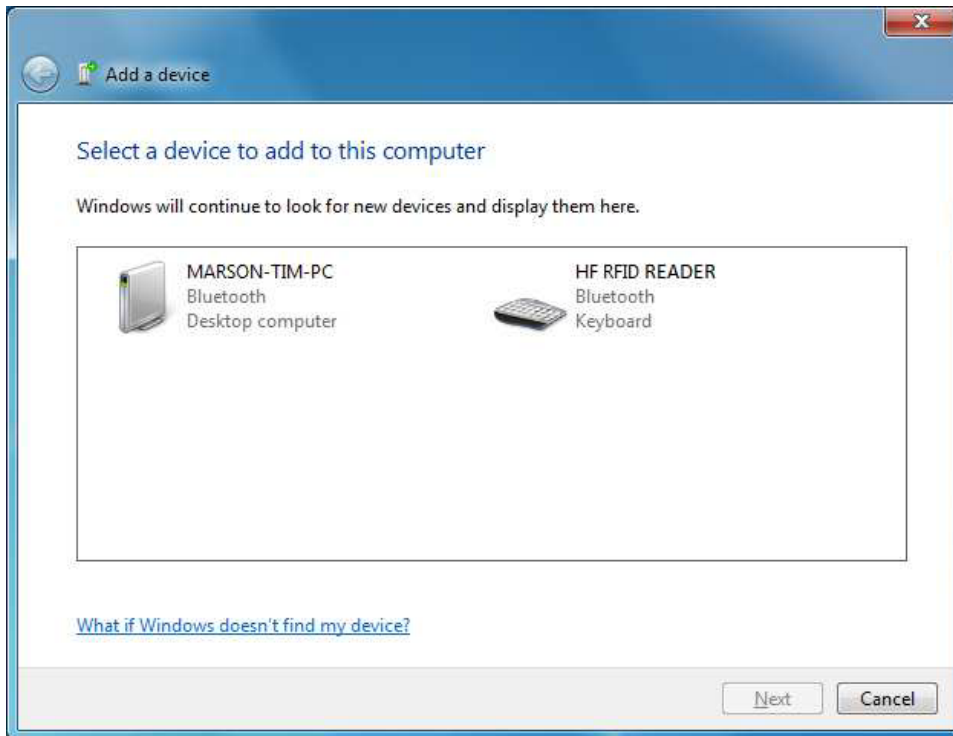


Figure 1-4: Select Bluetooth Device window

**Step 4:**

When successfully connected the AS10 will emit two short beeps, and the blue LED indicator will shut off. The PC/NB will show a message window like in Figure 1-5, and after clicking *Close* the PC/NB Bluetooth application Main Window will show **HF RFID Reader** as a connected device, as per Figure 1-6.



Figure 1-5: Connection Successful message window

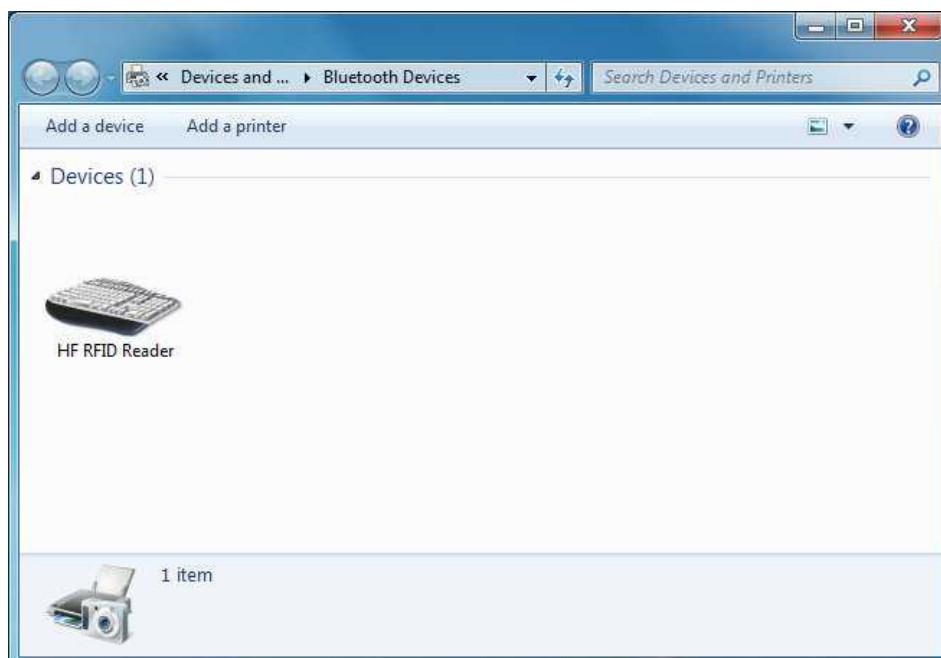


Figure 1-6: PC/NB Bluetooth application Main Window

**Step 5:**

Launch a program that can accept HID keyboard input, such as Notepad. NFC Tag data read by the AS10 will output to that program

#### 1-4-4. Connecting to an Apple iOS Device

**Step 1:**

Press and hold the Trigger Button for 2 seconds to boot the unit, after which the blue LED indicator will flash continuously. (If the blue LED indicator does not flash, it means the unit is not currently in Bluetooth Mode for its Communication Interface. Please refer to Section 5-3. **Communication Interface**, and change the Communication Interface to **BT-HID**.)

**Step 2:**

On the Apple iOS device, go to **Settings > Bluetooth**, and turn on Bluetooth, as per Figure 1-8.



Figure 1-8: Bluetooth Settings screen

**Step 3:**

In the discoverable devices list, select **HF RFID Reader**, as per Figure 1-9



Figure 1-9: Select HF RFID Reader from the discoverable devices list.

**Step 4:**

Upon establishing connection the MR10A7 will emit two short beeps and turn off its blue LED indicator. Also, the HF RFID Reader will list as "Connected" in the Apple iOS device's Bluetooth devices list, as per Figure 1-10.

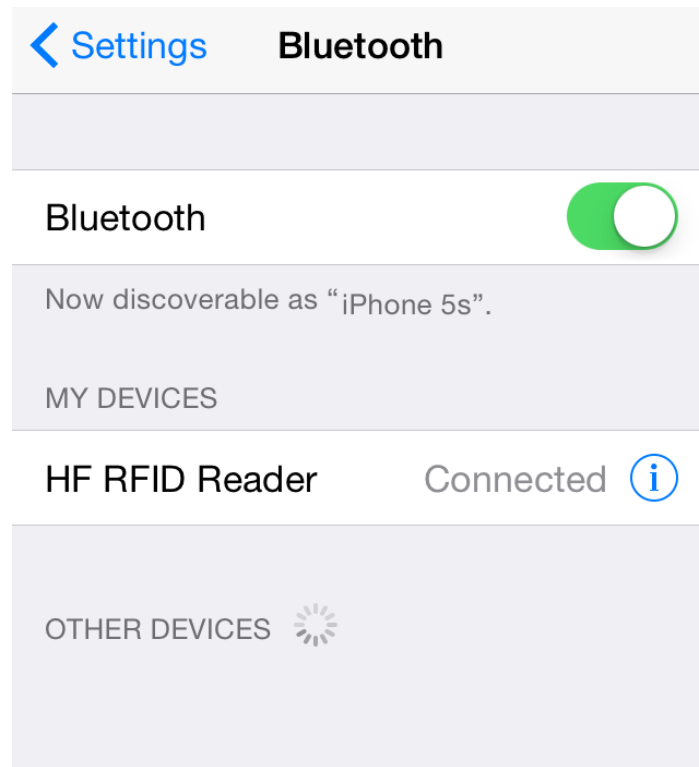
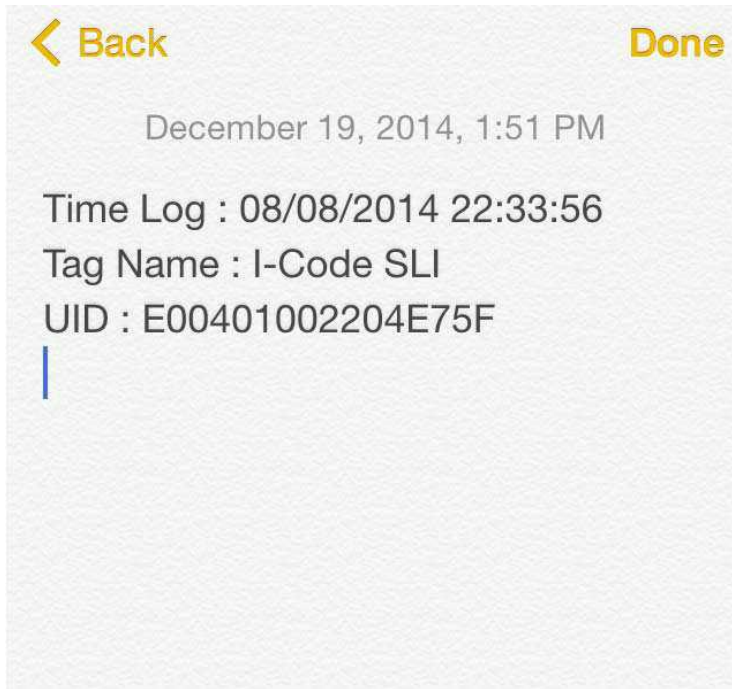


Figure 1-10: The HF RFID Reader now lists as "Connected" in the discoverable devices list.

**Step 5:**

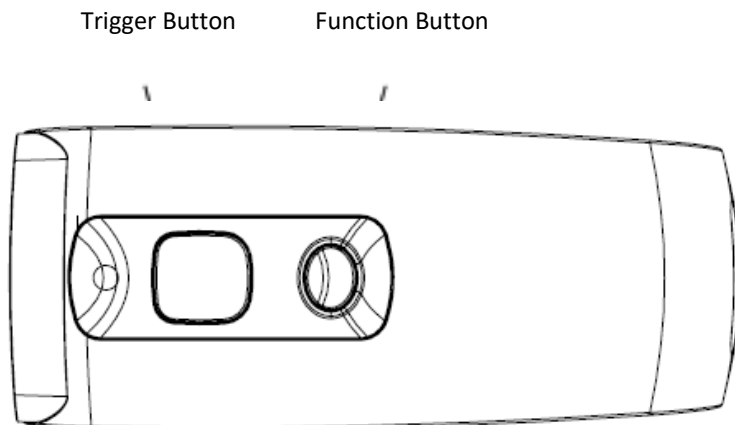
Launch an app that can accept HID keyboard input, such as Notes. NFC Tag data read by AS10 will output to that app, as per Figure 1-11.



**Figure 1-11:** NFC Tag data will output to an app

**Step 6:**

If a virtual keyboard is required, please press the Function Button once, as per Figure 1-12. At this moment the AS10 will emit one short beep, and the Apple iOS device's virtual keyboard will pop out.



**Figure 1-12:** Trigger Button and Function Button locations

## 1-4-5. Connecting to an Android Device

### Step 1:

Press and hold the Trigger Button for 2 seconds to boot the unit, after which the blue LED indicator will flash continuously. (If the blue LED does not flash, it means the unit is not currently in Bluetooth Mode. Please refer to Section 5-3. **Communication Interface**, and change the Communication Interface to BT-HID.)

### Step 2:

On the Android device, go to **Settings > Bluetooth**, and turn on Bluetooth, as per Figure 1-13.

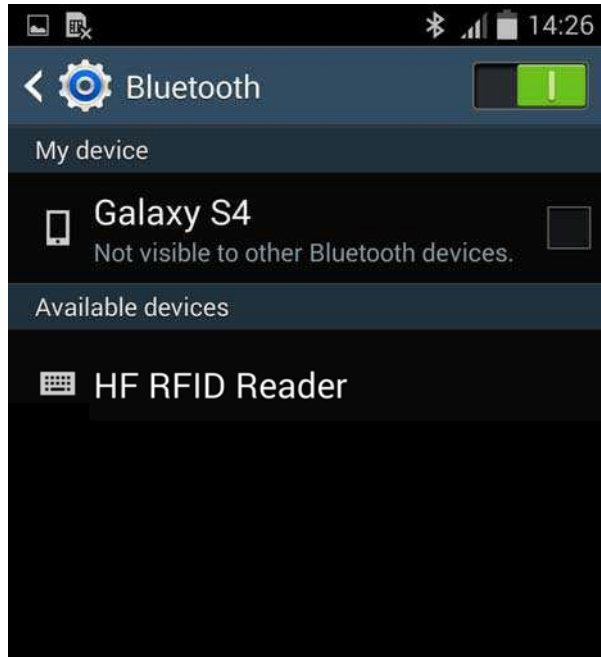


Figure 1-13: Bluetooth Settings screen

### Step 3:

In the available devices list, select HF RFID Reader, as per Figure 1-14.

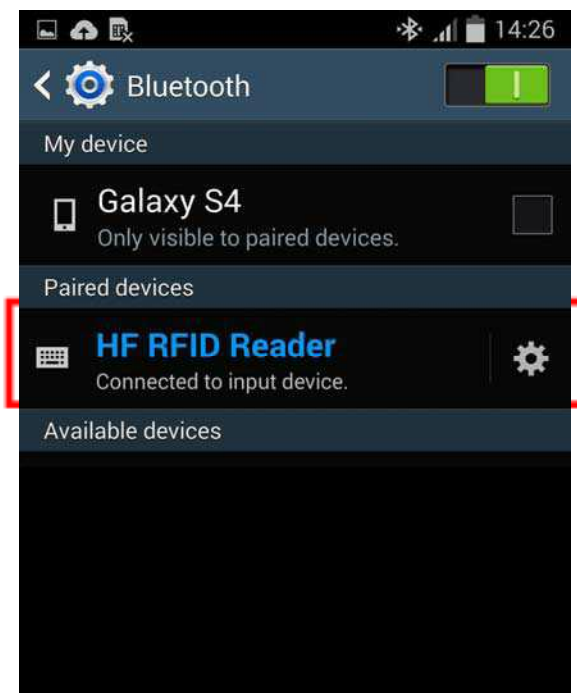


Figure 1-14: Select HF RFID Reader from the Bluetooth Settings screen.

**Step 4:**

Upon establishing connection the AS10 will emit two short beeps and turn off its blue LED indicator. Also, the HF RFID Reader will list as “Connected” in the Android device’s Bluetooth devices list, as per Figure 1-15.

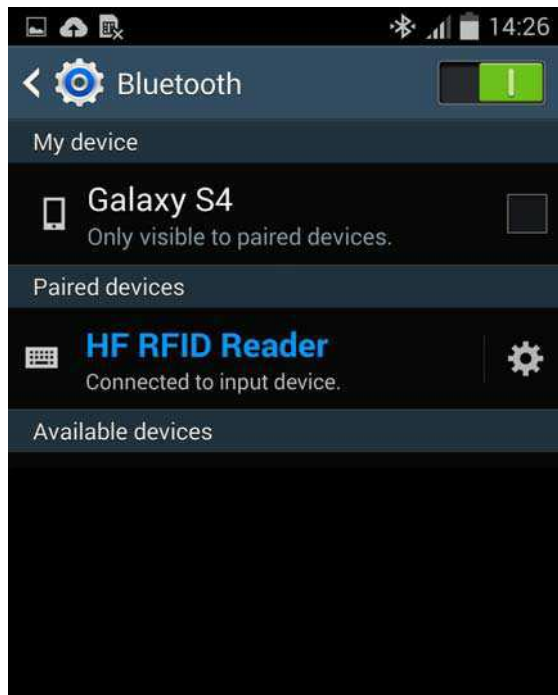


Figure 1-15: The HF RFID Reader now lists as “Connected” in the Bluetooth setup screen.

**Step 5:**

Launch an app that can accept HID keyboard input, such as ColorNote. NFC Tag data read by the AS10 will output to that app, as shown in Figure 1-16.

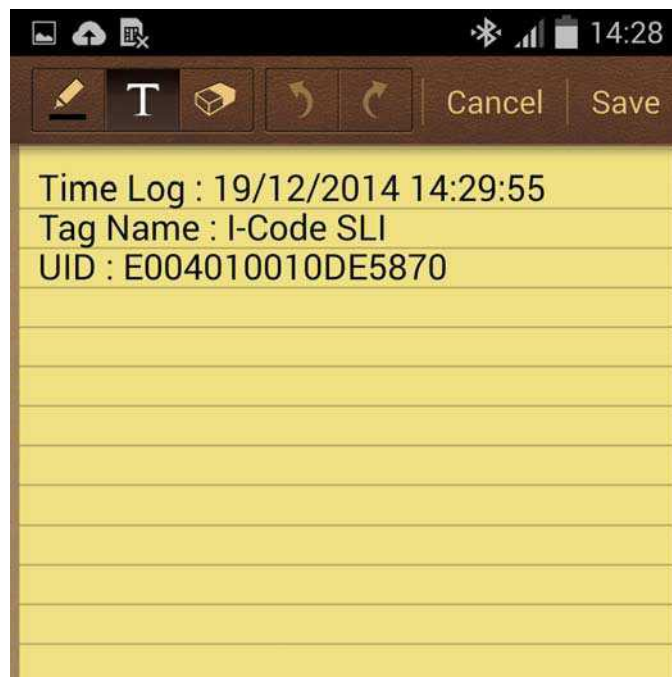


Figure 1-16: NFC Tag data outputs to an app.



**Step 6:**

If a virtual keyboard is required, please go to **Settings > Language and Input > Default**, and turn off the physical keyboard (or in some cases, turn on the on-screen keyboard) in the Select Input Method screen, as shown in Figure 1-17. At this time the virtual keyboard will resume normal operation.



Figure 1-17: Turn on the on-screen keyboard.

### 1-4-6. Reading NFC Tags

AS10's RFID antenna is located at its front (as per Figure 1-18). When reading, hold the unit, aim at the NFC tag (as per Figure 1-19), and press the Trigger button. If reading is successful (Good Read), the AS10 will emit one beep and the green LED indicator will simultaneously lit for one second. Reading Range varies based on NFC tag specifications, as Table 1-4 describes.

Standard	Reading Range
ISO 14443A	0~25mm
ISO 14443B	0~25mm
ISO 15693	0~50mm
Others	0~25mm

Table 1-4: Reading Range for Tags of various standards.

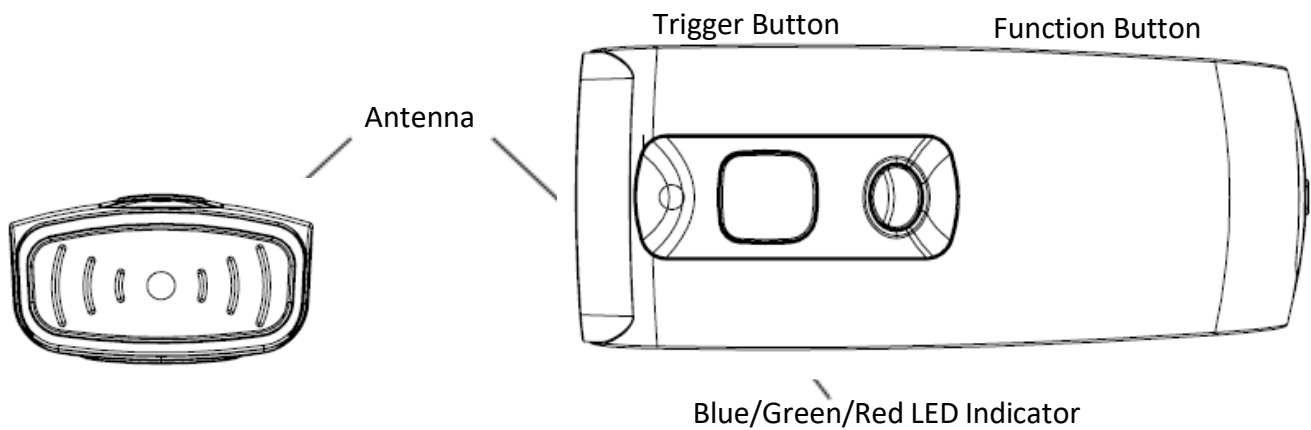


Figure 1-18: Antenna, LED, Trigger Button and Function Button locations

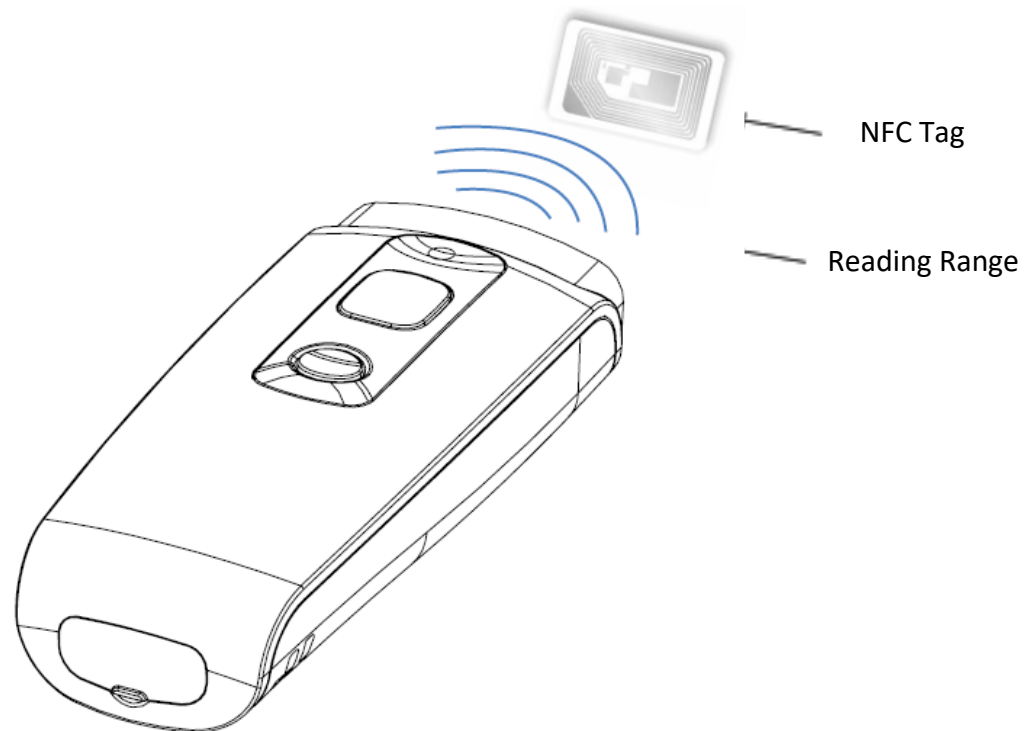


Figure 1-19: Aiming at an NFC Tag and Reading Range

### 1-4-7. Clearing the Bluetooth Pairing Record

The AS10 will save its Bluetooth pairing records and, when disconnected, will automatically attempt to restore previous connections. By doing the following, will clear AS10's Bluetooth pairing record, facilitating new connections:

**Long press on the Function Button for 5 seconds without releasing. The unit will emit three (3) beeps and the blue LED will start flashing as confirmation that the reader is discoverable by the host.**

After clearing its Bluetooth pairing record the AS10 will break off all Bluetooth connections, entering Bluetooth Disconnected status.

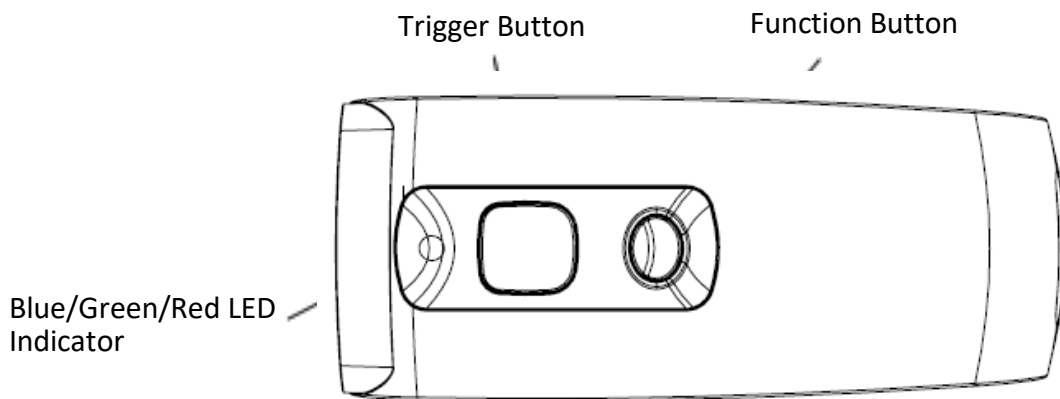


Figure 1-20: Trigger Button and Function Button locations

**CAUTION !** After clearing the Bluetooth connection record the AS10 will enter Bluetooth Disconnected status and continuously flash its blue LED indicator. If the blue LED indicator does not flash, it means the unit's Communication Interface is not in Bluetooth Mode. Please refer to Section 5-3. **Communication Interface.**

## 1-4-8. Storing/Deleting Memory Data

When the Communication Interface is set to Memory (refer to Section 5-3. **Communication Interface**), data obtained from NFC Tag read operations will be stored in AS10's memory. The following steps will store or delete the data within.

### A. Storing the Data in Memory

#### Step 1:

After completing an NFC Tag read operation, use a micro USB cable and connect the AS10 to a PC/NB.

#### Step 2

Open the *My Computer* window and enter the removable storage device "MiniScan", as per Figure 1-21.

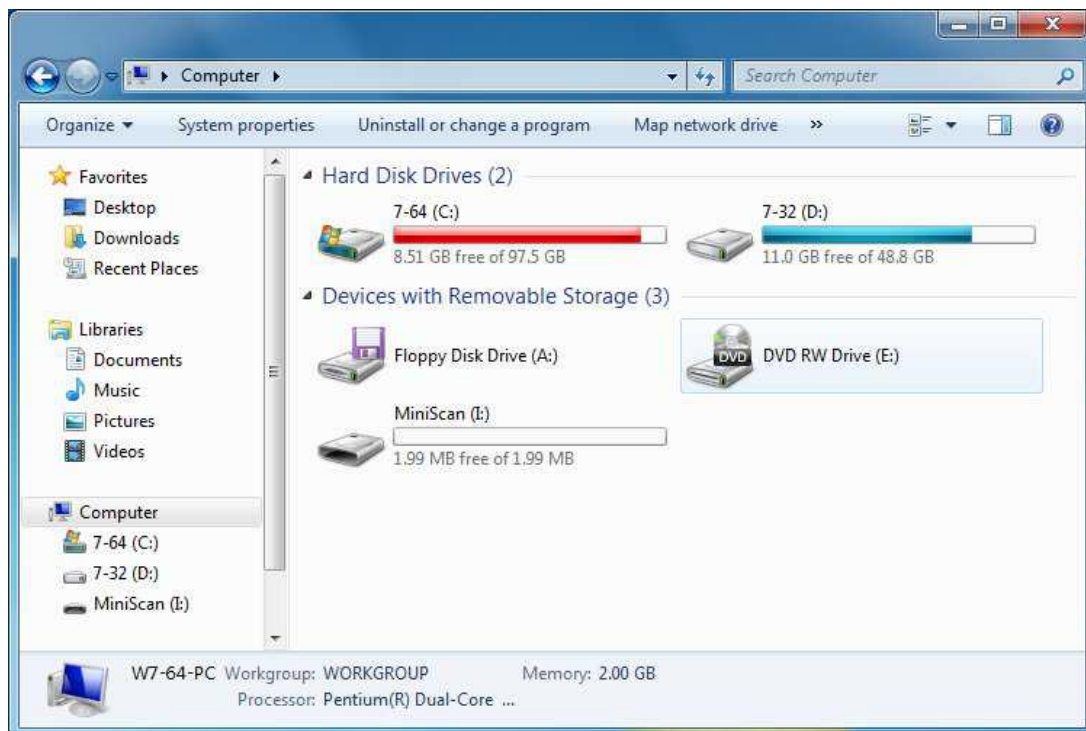


Figure 1-21: Entering the removable storage device "MiniScan" through *My Computer*.

**Step 3:**

Copy the file TAGDATA.TXT, found in the removable storage device “MiniScan”, to the PC/NB, as per Figure 1-22.

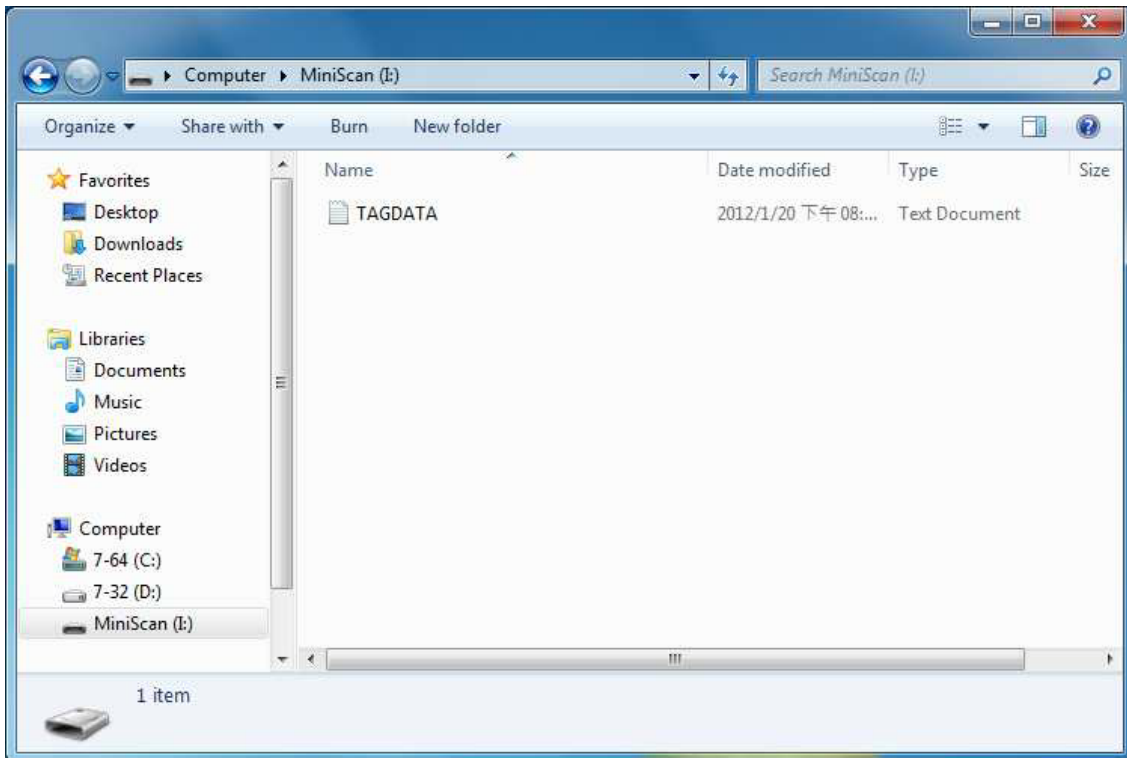


Figure 1-22: Copy the file TAGDATA.TXT to the PC/NB.

**Step 4:**

Open TAGDATA.TXT using Excel.

**Step 5:**

In the *Text Import Wizard, Step 1 of 3* dialogue box, choose *Delimited*, and click *Next*, as per Figure 1-23.

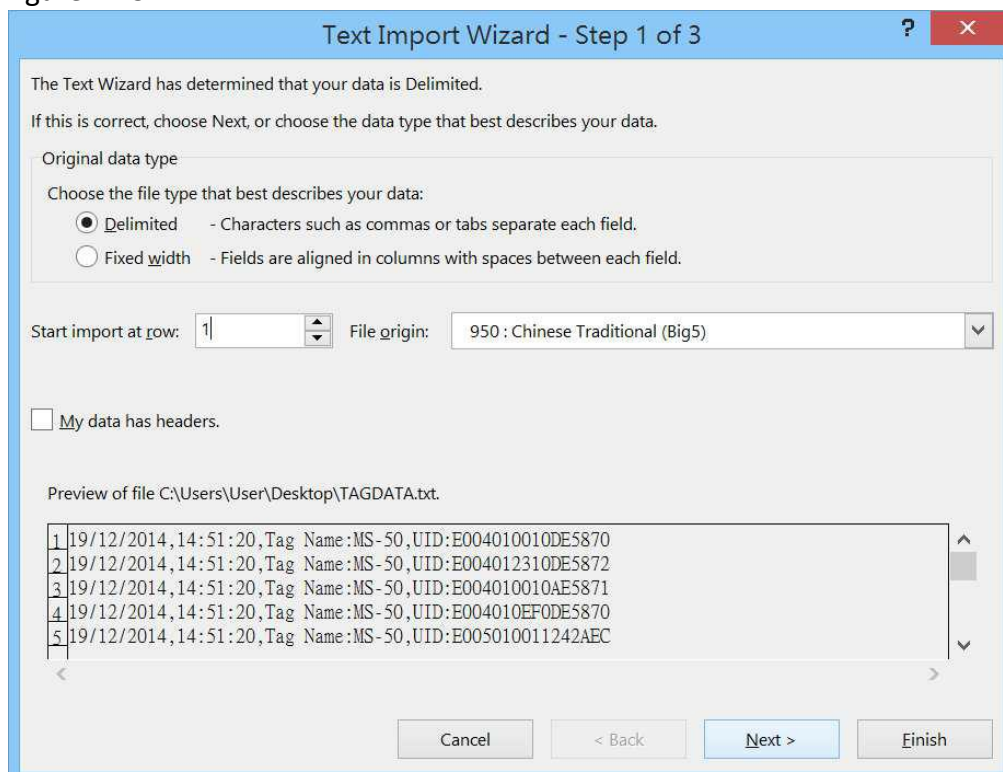


Figure 1-23: Text Import Wizard, Step 1 of 3 dialogue box.

**Step 6:**

In the *Text Import Wizard - Step 2 of 3* dialogue box, select Comma, and click *Next*, as per Figure 1-24.

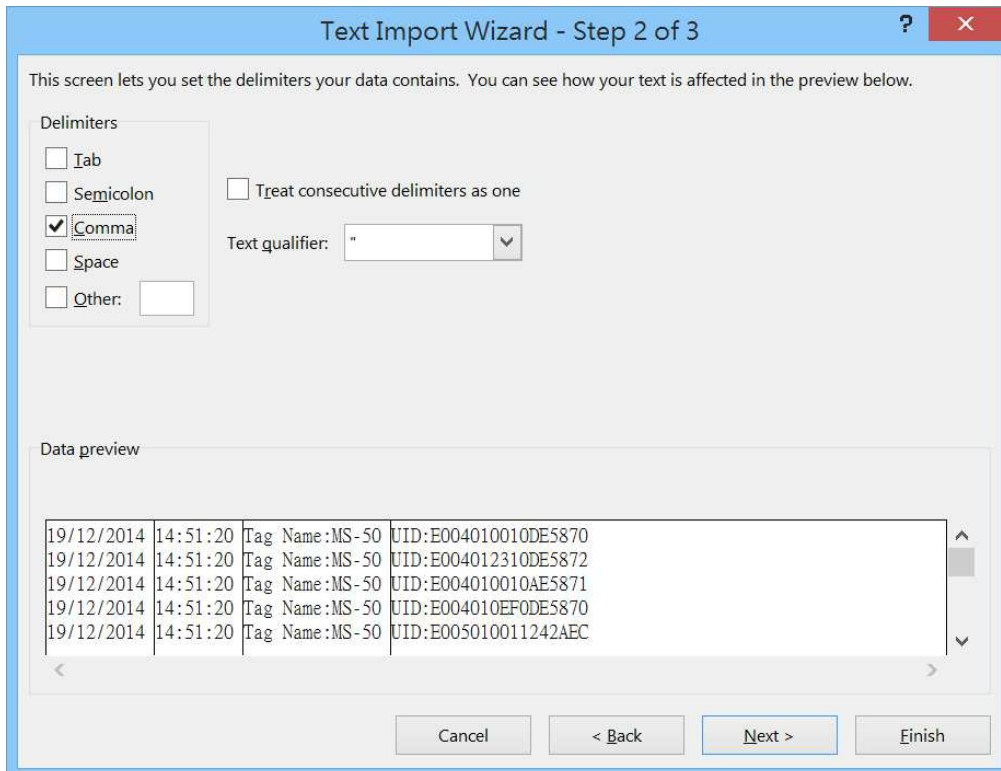


Figure 1-24: *Text Import Wizard - Step 2 of 3* dialogue box

**Step 7:**

In the *Text Import Wizard - Step 3 of 3* dialogue box, if there are no special requirements, directly click *Finish*, as per Figure 1-25.

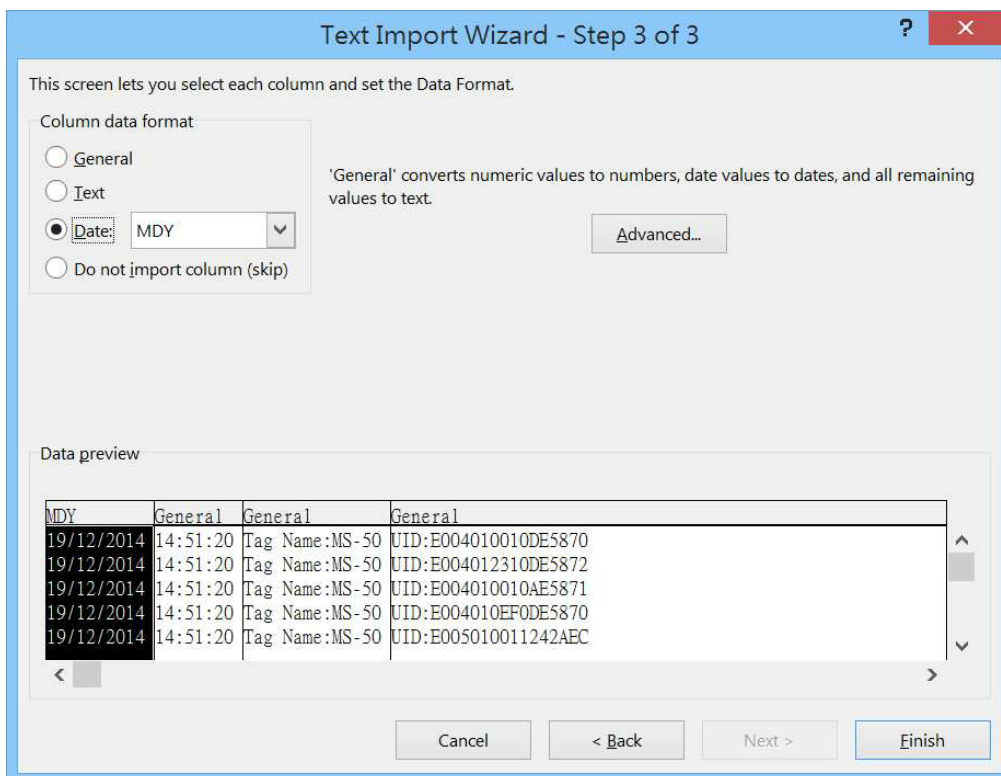


Figure 1-25: *Text Import Wizard - Step 3 of 3* dialogue

### Step 8:

The Memory data will appear in the form of an Excel spreadsheet, as per Figure 1-26. If required to change the data format, please refer to sub-section 5-4. **Memory Communication Interface**

	A	B	C	D	E	F	G	H	I	J
1	19/12/2014	14:51:20	Tag Name	UID:E004010010DE5870						
2	19/12/2014	14:51:20	Tag Name	UID:E004012310DE5872						
3	19/12/2014	14:51:20	Tag Name	UID:E004010010AE5871						
4	19/12/2014	14:51:20	Tag Name	UID:E004010EF0DE5870						
5	19/12/2014	14:51:20	Tag Name	UID:E005010011242AEC						
6	19/12/2014	14:51:20	Tag Name	UID:E004010010DE5870						
7										
8										
9										
10										
11										

Figure 1-26: Memory data, as shown in an Excel table.

### B. Deleting the Data in Memory

To delete the data on AS10's Memory, please directly delete the file TAGDATA.TXT in the removable storage device "MiniScan", as per Figure 1-27. In about 5 seconds the AS10 will emit 2 short beeps, indicating a successful delete.

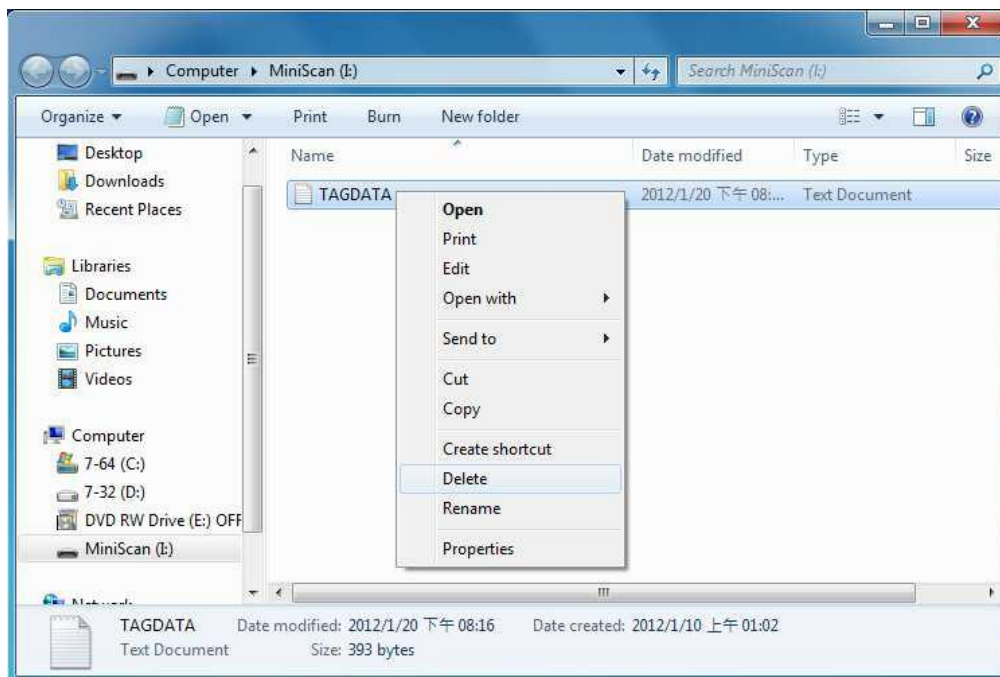


Figure 1-27: Deleting the file TAGDATA.TXT

## 2. Configuration Mode

### 2-1. Entering Configuration Mode

Under normal circumstances, the AS10 enters the Normal Operation Mode upon power-up. The following steps will switch the AS10 to Configuration Mode and connect it to the Host PC's Arkscan RFID Utility.

#### Step 1:

Use a micro USB cable and connect the AS10 to the Host PC.

#### Step 2:

Press and hold AS10's Function button first without releasing, then press and hold the Trigger button, as per Figure 2-1. After pressing both buttons for about 5 seconds, the AS10 will emit two short beeps, turn on Green LED indicator, and enter Configuration Mode. At the same time it will switch its Communication Interface to USB Virtual COM.

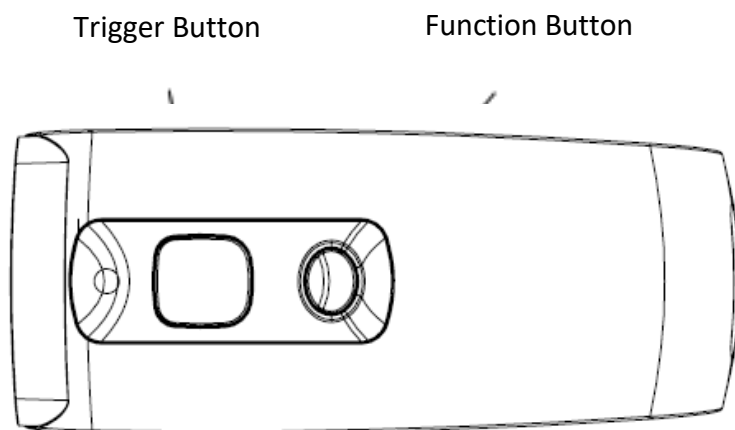
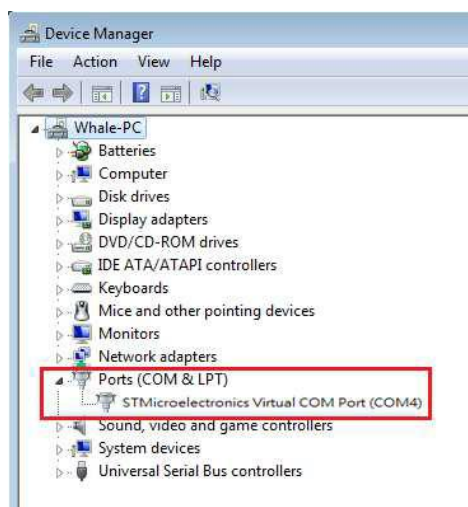


Figure 2-1: Press both buttons on the AS10.

#### Step 3:

Check the Host PC's Device Manager window to see if the USB Virtual COM device has been detected, as per Figure 2-2.



whether the USB Virtual COM device has been detected.



**Step 4:**

Open the Arkscan RFID Utility from the Host PC and complete the connection, as per Figure 3-1.

The above steps will switch the AS10 to Configuration Mode and connect it to the Host PC's Marson RFID Utility. The User may begin setting parameters on the AS10. For details refer to Sections **4. RFID Parameters Setup** and **5. Other Parameters Setup**.


## 2-2. Canceling / Exiting Configuration Mode

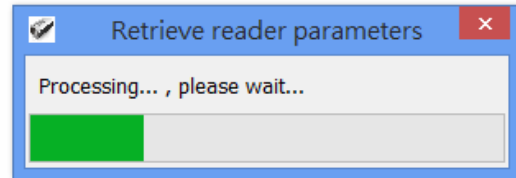
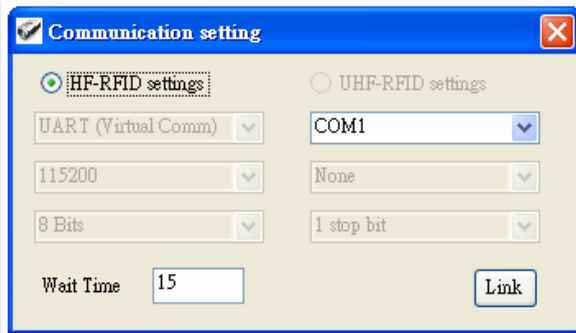
Once the AS10 enters Configuration Mode, if there are no communications instructions with the Host PC within the Waiting Time, or if **Exit** is selected within the Arkscan RFID Utility, it will automatically exit Configuration Mode and return to Normal Operation Mode. Please refer to Section **6-1. System**. When the unit exits Configuration Mode it will emit 2 short beeps and turn off the Green LED indicator.

While within Waiting Time, pressing AS10's Function button and then the Trigger button, holding both buttons for about 5 seconds, will also exit Configuration Mode. For full details refer to Section **5-11. Waiting Time**.

**CAUTION !** Prior to entering Configuration Mode, the AS10 will record the Communication Interface in use. Therefore if the Communication Interface was BT-HID prior to entering Configuration Mode, upon exiting Configuration Mode the Communication Interface will be restored to BT-HID; if the Communication Interface setting gets changed while in Configuration Mode, for example changed to USB-HID, then upon exiting Configuration Mode the Communication Interface will become the newly designated one, in this case USB-HID. For more on AS10's Communication Interface, see Section **5-3. Communication Interface**.

### 3. Operating the Arkscan RFID Utility

Execute Arkscan RFID Utility  and enter the program; choose the COM port to connect with, and click the “Link” button, as per Figure 3-1. Once connected, you will enter the Program’s Main Window, as per Figure 3-2.



Make Connection

Figure 3-1 Choosing the COM port to connect

#### 3-1. Introduction to Main Window

Once connected, enter the Program Operation main window, as shown in Figure 3-2 and explained below.

- 1) The Title Bar (upper-most area) shows the firmware version of the connected AS10.
- 2) Additional Functions area:

Communication: Disconnect or change the COM port.

Retrieve: Read AS10’s operation parameters.

Update: Upload presently configured operation data, etc.

For full details please refer to Section 6. **Arkscan RFID Utility Built-in Functions**

- 3) Settings Window: provides System Parameters and Settings.  
For full details please refer to 4. **RFID Parameters Setup**, and 5. **Other Parameters Setup**
- 4) Notifications Window: Shows currently selected parameters and easy explanations
- 5) Status Bar (lower-most area): shows AS10’s current connection state
- 6) Exit: Exit the Utility program and inform AS10 as to the program termination. The AS10 will return to Normal Operation Mode.

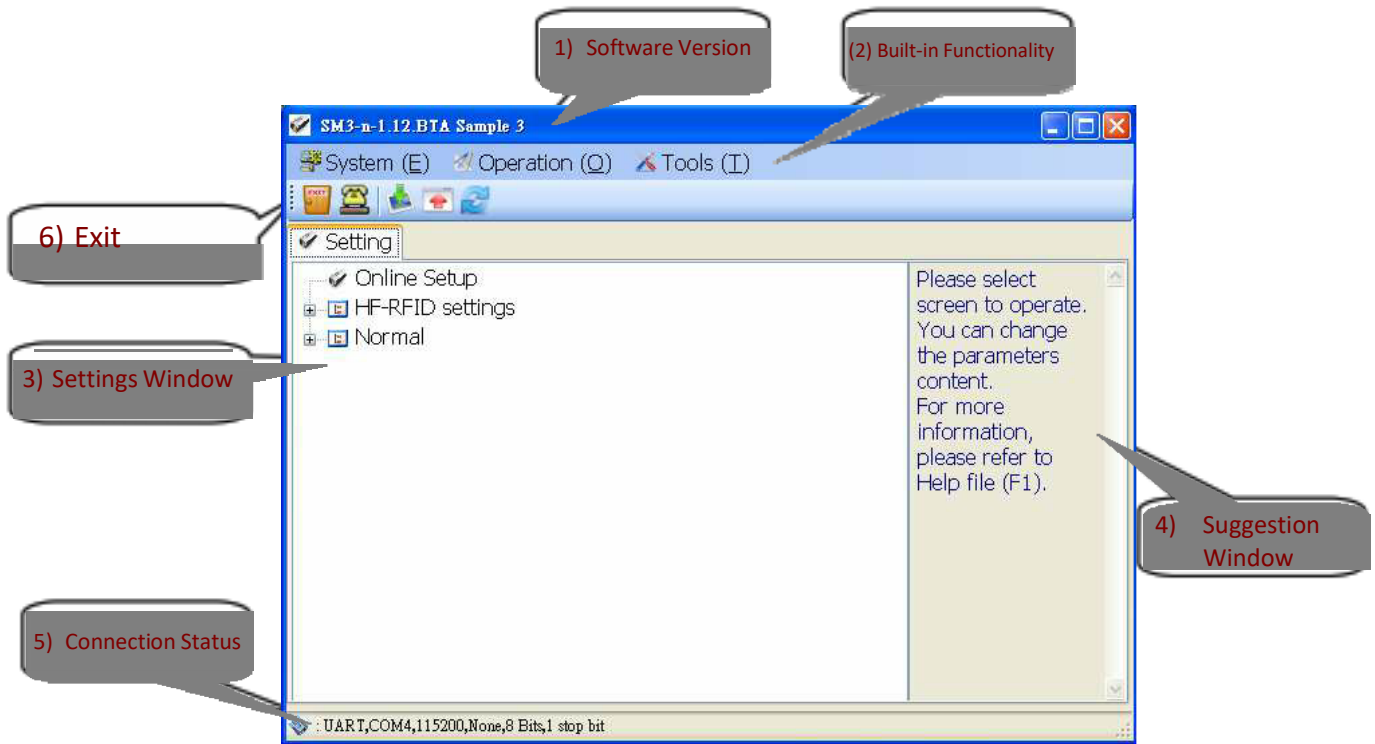


Figure 3-2 Program Operation Main Window

## 4. RFID Parameters Setup

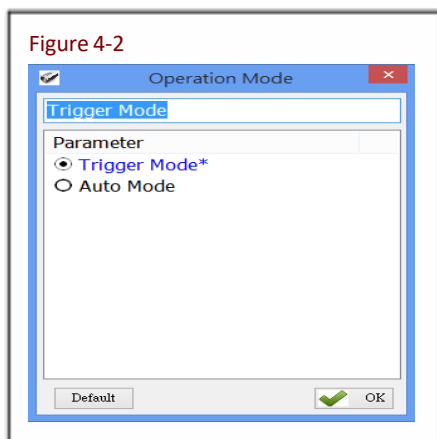
Below are all options of RFID Parameters Setup displayed in tree view:



Figure 4-1 RFID Parameters Setup


Choose the item to configure, then double click the left mouse button or press *Enter* to enter the desired parameters setting window.

### 4-1. Operation Mode



To configure the Operation Mode for either Trigger Mode or Auto Mode, choose one of the two.

Configuration Method:

Check one of the two options, then click  to send the new setting to the AS10.

Default setting: Trigger Mode

Detailed explanations for the two above-mentioned Operation modes are as follow:

#### (1) Trigger Mode Operation Method:

<A> Press the Trigger button to start a Tag Scan Session. Upon successful Tag Scan (Good Read) the Scan Session will stop.

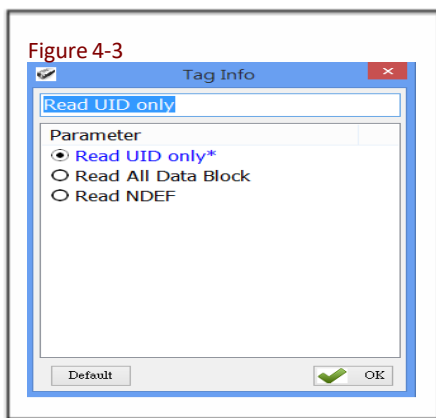
- <B> If the Trigger button is pressed but no successful Tag scan occurred within the Session Time, the Scan Session will terminate. In any case, releasing the Trigger button will terminate the Scan Session.
- <C> In Sleep Mode, pressing the Trigger button will automatically reactivate Trigger Mode. For Sleep Mode settings, please refer to **4-8. Enter Sleep Mode / Timer**.

**(2) Auto Mode Operation Method:**

- <A> The Auto Mode follows the same rules of operation as the Trigger Mode, except Tag Scan Sessions start automatically, without pressing the Trigger button.
- <B> Scan Sessions do not terminate unless the unit enters Sleep Mode.
- <C> Pressing the Trigger button while in Sleep Mode will automatically reactivate Auto Mode.

**CAUTION ! Auto Mode is more power-consuming.**

**4-2. Tag Info**



Tag Info provides user the options of Read UID only, Read All Data Block (reads full data on user memory) and Read NDEF (only reads data that conforms to NDEF(NFC Data Exchange Format) format on user memory).

Configuration Method:

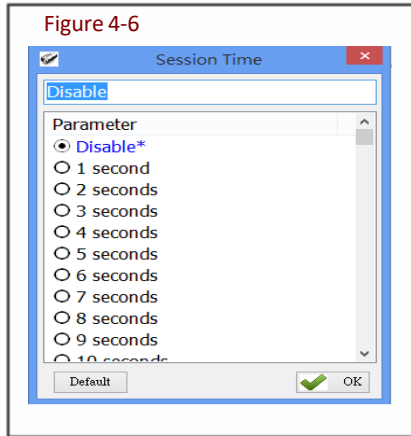
Check one of the three options, then click  OK to send the new setting to the AS10.

Default setting: Read UID only

### 4-3. Session Time and Delay Time

Sets the Session Time for a Scan Session and the Delay Time between Tags Scan.

#### 4-3-1. Session Time Operation Method

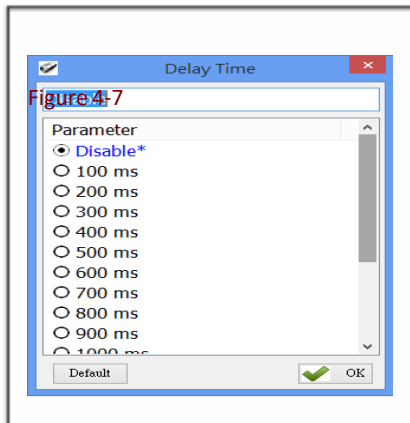


In Trigger Mode, if the Trigger button is pressed and no successful Tag scan is completed within the Session Time, the Scan Session terminates. This may be disabled by setting Session Time to 0 (Disabled).

Configuration Method: Select a value (0~255 seconds). When sure click  OK to transfer the set parameter value to the AS10.

Default setting: Disable

#### 4-3-2. Delay Time Operation Method



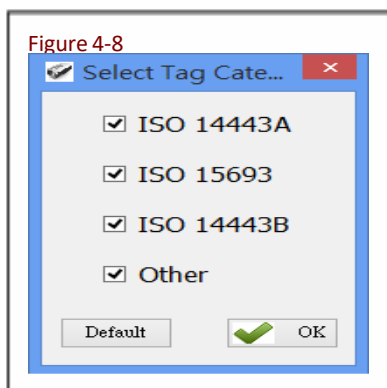
Sets the Delay Time between every Tag scan.

Configuration Method:

Select a value (ranging from 0 ~ 1500ms). When sure click  OK to transfer the set parameter value to the AS10.

Default setting: Disable (0 ms deactivates)

### 4-4. Select Tag Category



Chooses the types of NFC Tags that may enter a Scan Session. These are divided into ISO14443A, ISO14443B, ISO15693, and Others, as per the ISO. Multiple items may be selected.

Configuration Method: Multiple types may be selected.

Once confirmed, click  OK to transfer the set parameter values to the AS10 Default setting: All are selected

Often seen types of NFC Tags are listed in the table below:

ISO Category	ISO 14443A	ISO 15693	ISO 14443B	Others
<b>Tag Name</b>	Mifare S-50	I-Code SLI	SRI-X 512	Topaz
	Mifare S-70	ATC 1024	SRI-X 4K	Felica
	Mifare Ultralight	TI-256(Standard)		Felica Lite
	Mifare DesFire	TI-2048(Plus)		NTAG 203
	SLE66R35(M-Classic)	SRF55V10P(EM)		

Table 4-1 : NFC Tag code names

#### 4-5. Data Output Format

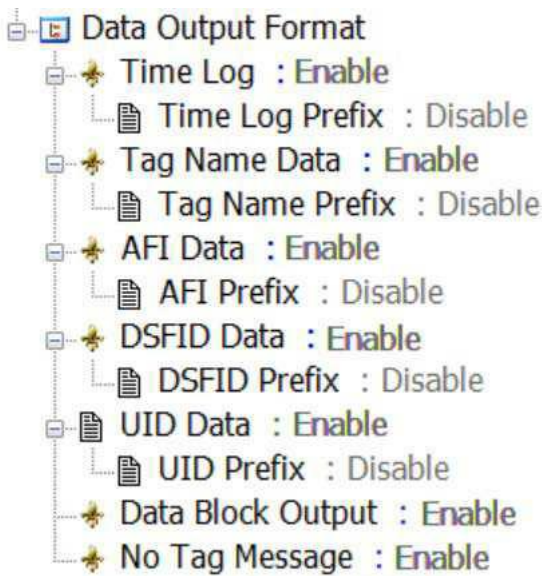


Figure 4-9: Setting the Data Output Format

The Data Output Format option includes settings for Time Log, Tag Name, AFI, DSFID, UID and Data Block (User Memory). For example:

*Time Log: 2014/12/19 12:30:59*

*Tag Name: I-Code SLI*

*AFI: 10*

*DSFID: 00*

*UID: AA839F31*



Figure 4-10

Each parameter is set like in Figure 4-10: simply choose one of either  Disable  Enable and then click  OK to transfer parameter values to the AS10.

#### 4-5-1. Time Log

Whether to output the Time Log for Tag scans. For date and time formats please refer to **5-1. Date Format** and **5-2. Time Format**

Time Log:

Disable       Enable

Configuration Method: Choose one of the two. Default setting: Disable

If Time Log is enabled, the following may also be configured:

##### 4-5-1-1. Configure whether to output Time Log's Caption "Time Log":

Time Log Prefix:

Disable       Enable

Configuration Method: Choose one of the two  
Default setting: Disable

#### 4-5-2. Tag Name

Whether to output Tag code names. Please refer to Table 4-1.

Tag Name Data :

Disable       Enable

Configuration Method: Choose one of the two.  
Default setting: Disable

If Tag Name Data is enabled, the following may also be configured:

##### 4-5-2-1. Configure whether to output Tag Name's caption "Tag Name":

Tag Name Prefix :

Disable       Enable

Configuration Method: Choose one of the two.  
Default setting: Disable

#### 4-5-3. AFI Data

Whether to output AFI data. Only ISO15693 and ISO14443B's Tags provide AFI data.

AFI Data:

Disable       Enable

Configuration Method: Choose one of the two.  
Default setting: Disable

If AFI data is enabled, the following may also be configured:



#### 4-5-3-1. Configure whether to output AFI caption “AFI”

AFI Prefix :

Disable                      Enable

Configuration Method: Choose one of the two.

Default setting: Disable

#### 4-5-4. DSFID Data

Whether to output DSFID. Only ISO15693 Tags provide DSFID data.

DSFID Data :

Disable                      Enable

Configuration Method: Choose one of the two.

Default setting: Disable.

If DSFID is enabled, the following may also be configured:

#### 4-5-4-1. Configure whether to output DSFID’s caption “DSFID”

DSFID Prefix :

Disable                      Enable

Configuration Method: Choose one of the two.

Default setting: Disable

#### 4-5-5. UID Data

Whether to output Tags’ UID Data.

UID Data :

Disable                      Enable

Configuration Method: Choose one of the two.

Default: **Enable**

If UID Data is enabled, the following may also be configured:

#### 4-5-5-1. Configure whether to output UID caption “UID”

UID Prefix :

Disable                      Enable

Configuration Method: Choose one of the two.

Default setting: Disable

#### 4-5-6. Data Block Output

Whether to output the data block of User Memory. This is only applicable when **4.2 Tag Info** is set to “Read All Data Block” or “Read NDEF”.

Data Block Output :

Disable                       Enable

Configuration Method: Choose one of the two.

Default setting: Disable

#### 4-5-7. No Tag Message

Whether to output No Tag Message. No Tag Message is a preset message, such as “No Tag”, that displays when no Tag could be read upon terminating a Scan Session. It is applicable only for Trigger Mode.

No Tag Message :

Disable                       Enable

Configuration Method: Choose one of the two.

Default setting: Disable

## 5. Other Parameters Setup

AS10 has other parameters not related to RFID, such as Date Format, Time Format, Communication Interface, Sleep Mode etc., as per Figure 5-1.

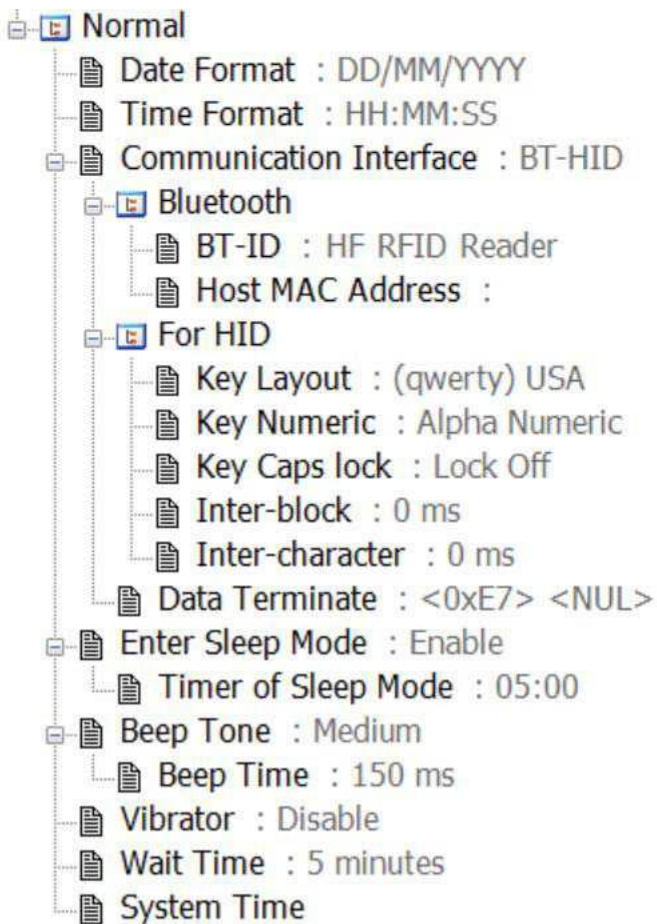
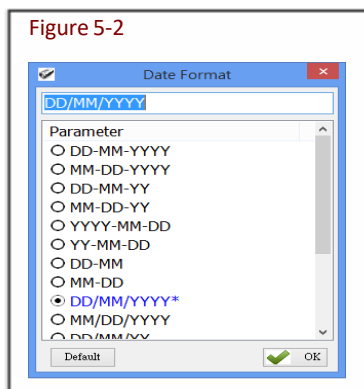


Figure 5-1: Other parameters not related to RFID.

### 5-1. Date Format



Data output of memory data's time tag.

Sets how date format is arranged: D means Date, M means Month, Y means Year. 16 choices are available.

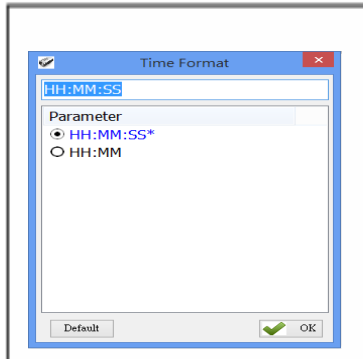
Configuration Method:

Choose one among the 16, and press  OK to transfer the parameter setting to the AS10.

Default setting: DD/MM/YYYY

## 5-2. Time Format

Figure 5-3



Time format of memory data's time tag.  
Sets how time format is arranged: H means Hour, M means Minute, S means Second. 2 choices are available.

Configuration Method:

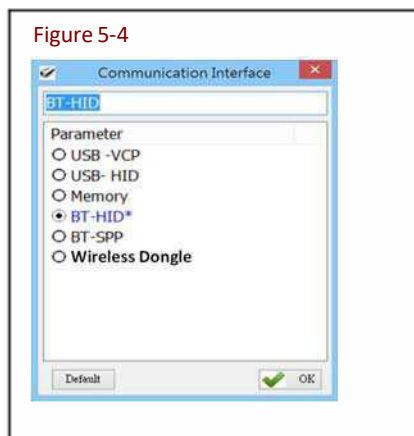
Choose one of the two, and press



to transfer the parameter value to the MR10A7.

Default setting: HH:MM:SS

### 5-3. Communication Interface



Sets the communication interface between the MR10A7 and the Host PC, meaning the communication interface for MR10A7's data output.

Six choices are available.

Configuration Method:

Choose one of the six, and press  to transfer parameter values to the AS10.

Default setting: BT-HID

Each Communication Interface is elaborated upon below:

#### 1) **USB-VCP**

Use USB Virtual COM as communication interface.

Data will be sent in hexadecimal format.

#### 2) **USB-HID**

Use the USB HID Keyboard as communication interface.

Tag data will be sent in ASCII format. For example, tag data <0x03> is sent to the host as <0x30><0x33>, 2 bytes in total.

#### 3) **Memory**

When using Memory as the communication interface, the AS10 will not output scanned data, will store them within its internal memory as a file (about 2MB in size). To access that file, a connection with the Host PC is required.

Tag data will be stored in ASCII format. For example, tag data <0x03> is stored in AS10 as <0x30><0x33>, 2 bytes in total.

#### 4) **BT-HID**

Uses the Bluetooth HID Keyboard communication interface.

Tag data will be sent in ASCII format. For example, tag data <0x03> is sent to the host as <0x30><0x33>, 2 bytes in total.

#### 5) **BT-SPP**

Uses the Bluetooth SPP (BT Virtual COM) communication interface.

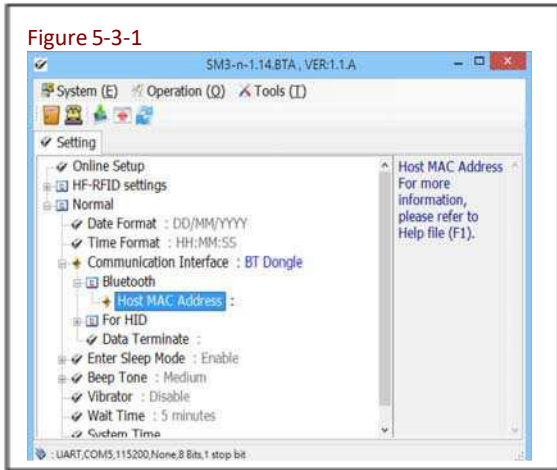
Tag data will be sent in hexadecimal format.

#### 6) **Wireless Dongle**

Uses the Wireless(Bluetooth) Dongle communication interface.

Tag data will be sent in ASCII format. For example, tag data <0x03> is sent to the host as <0x30><0x33>, 2 bytes in total.

### 5-3-1. Establish Connection with Wireless Dongle



#### STEP 1.


Go to **Normal > Communication Interface > Bluetooth > Host MAC Address** and double click on Host MAC Address to enter the Wireless Dongle's MAC address.



#### STEP 2.

Replace "FIX" with "001C97". For example, if the MAC address of your Wireless dongle is FIX115453, then enter 001C97115453 onto the input field and click OK.

#### STEP 3.

Click  to update parameters onto the RFID reader. Once the progress bar completes, the RFID reader is successfully updated. The RFID reader will emit two beeps as indication that it has successfully connected to the pre-set Wireless Dongle. Meanwhile, the Wireless Dongle will turn its LED to solid Blue as indication that a connection has been established. The RFID reader will automatically exit the configuration mode once it is connected to the Wireless Dongle.

#### STEP 4.

Exit the RFID Utility by clicking .

### 5-3-2. Disconnect from Wireless Dongle

Long press on the Function Button for 5 seconds without releasing. The RFID reader will emit three (3) beeps and the blue LED will start flashing in blue as confirmation that the reader is discoverable by the host.

The Wireless RFID reader's connection record on the Wireless Dongle will also be deleted with this action.

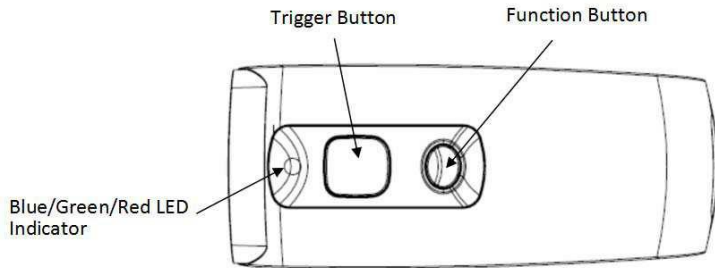


Figure 5-4-3

### 5-3-3. Clear All Pairing Records on Wireless Dongle

The Wireless Dongle can hold as many as 7 readers' pairing record. If the reader doesn't disconnect from the Wireless Dongle (using method described in Chapter II), its record will be stored on the Wireless Dongle, making the 8<sup>th</sup> reader unable to establish connection with the dongle. To clear all records of the reader's connection, simply do this:

**STEP 1.** Make sure your RFID reader is connected to the Dongle.

**STEP 2.** Press and hold the RFID reader's Function button first without releasing, then press and hold the Trigger button. After pressing both buttons for about 5 seconds, the RFID reader will emit two short beeps, turn on Green LED indicator, and enter Configuration Mode.

**STEP 3.** Long press on the Trigger Button for 5 seconds without releasing. The unit will emit five (5) beeps and the blue LED will start flashing as confirmation that all records on the Wireless Dongle have been cleared.

## 5-4. Memory Communication Interface Options

When the Memory Communication Interface is chosen, each scanned data is marked with date and time, and then stored in the internal memory. When the memory is full with data, Tag reading will elicit a warning signal in the form of 3 short beeps and a one second lighting of the red LED indicator, and no reading will actually occur. Only when the data inside the memory has been received and deleted by the Host PC may the Scan Session resume. Choosing Memory as the Communication Interface enables the Field Separator and Storage Sequence configuration options.

### 5-4-1. Field Separator

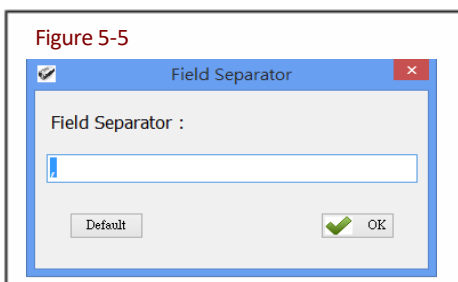


Figure 5-5

Sets the symbol used to separate each field for data formatting.

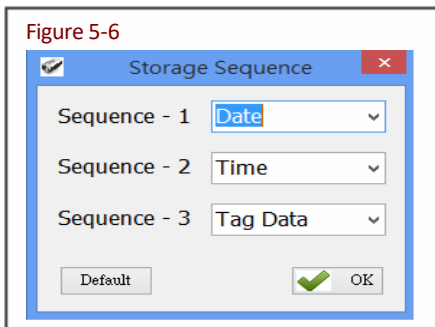
Configuration Method:

Directly input the symbol, maximum 1 Byte in size. Then click

OK to transfer the parameter value to the AS10.

Default setting: comma (,)

## 5-4-2. Storage Sequence



Sets the storage sequence of the fields Date, Time, Tag Data.

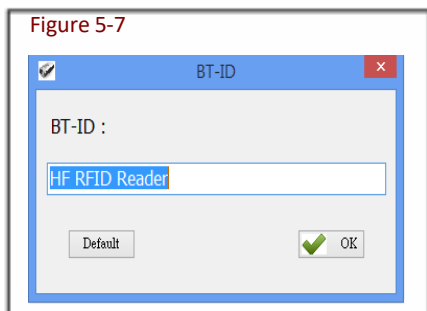
Configuration Method: For each Storage Sequence, choose one of the options. No option may be chosen twice. When done, click OK to transfer the parameter setting to the AS10.

Default setting: Sequence - 1: Date  
Sequence - 2: Time  
Sequence - 3: Tag Data

## 5-5. BT-HID and BT-SPP Communication Interface Options

When BT-HID or BT-SPP is chosen as the Communication Interface, the BT-ID and BT-Pin-Code options become available.

### 5-5-1. BT-ID

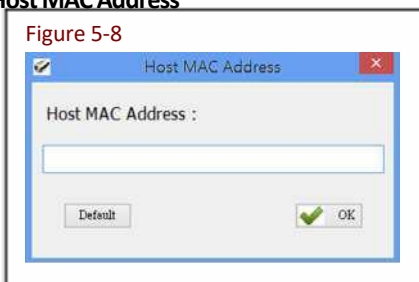


Sets the Bluetooth-ID name, for Host-PC display purposes.

Configuration Method: Choose a desired phrase, maximum 16 Bytes. Once chosen, click OK to transfer the parameter value to the AS10.

Default setting: HF RFID Reader

### 5-5-2. Host MAC Address

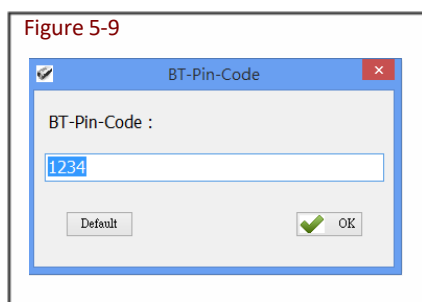


Sets the MAC address of the host that MR10A7 will automatically connect with.

Configuration Method: Enter the Bluetooth MAC address (without colon ":"), maximum 12 Bytes. Once chosen, click OK to transfer the parameter value to the AS10.

Default setting: Null

### 5-5-3. BT-Pin-Code



Sets the Pin-Code used when connecting to the Host-PC via BT-SPP.

Configuration Method: Enter the Pin-Code value, maximum 8 Bytes. Once chosen, click OK to transfer the parameter value to the AS10.

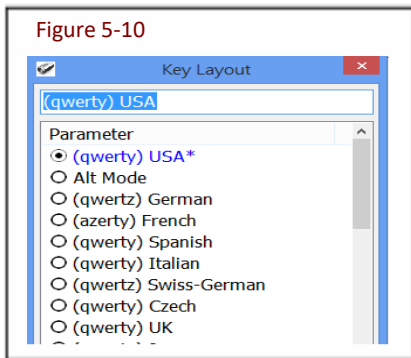
Default setting: 1234



## 5-6. USB-HID and BT-HID Communication Interface Options

When USB-HID or BT-HID are chosen as the Communication Interface, additional options become available. These include Key Layout, Key Numeric, Key Caps lock, Inter-block, and Inter-character.

### 5-6-1. Keyboard Layout



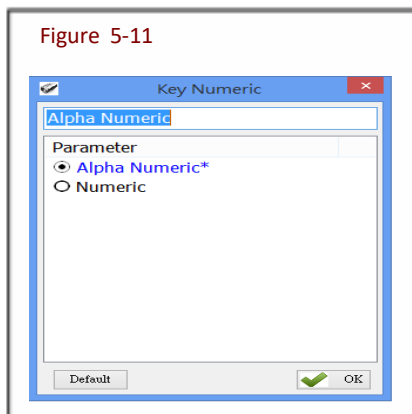
Sets the language used for AS10's data output to the Host- PC. 24 choices are available.

Configuration Method:

Choose one, then click  OK to transfer the parameter setting to the AS10.

Default setting: (qwerty) USA

### 5-6-2. Key Numeric



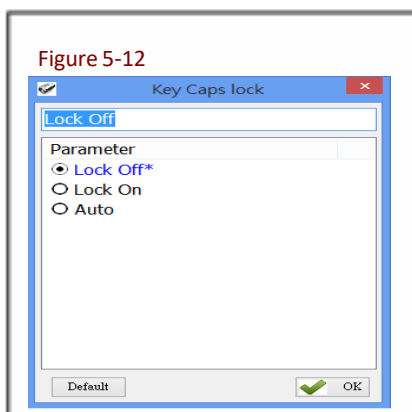
Sets the keyboard used for MR10A7's Scan Code output.

Configuration Method:

Choose one, then click  OK to transfer the parameter setting to the AS10.

Default setting: Alpha Numeric

### 5-6-3. Key Caps Lock



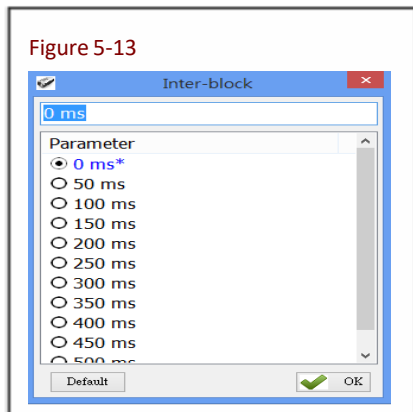
Sets the keyboards Caps Lock state to On, Off or Auto.

Configuration Method:

Choose one, then click  OK to transfer the parameter setting to the AS10.

Default setting: Lock Off

#### 5-6-4. Inter-black Interval Time



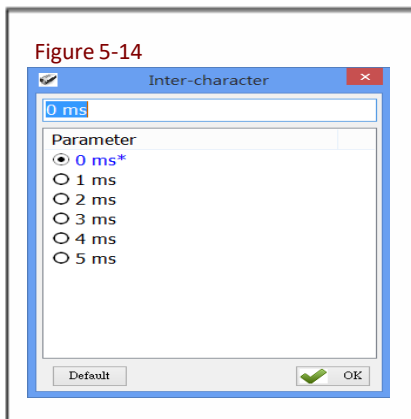
Sets the Interval Time between each packet of data (including the separator symbol) and the next.

Configuration Method:

Choose one (value range 0 ~ 500 ms), then click  OK to transfer the parameter setting to the AS10.

Default setting: 0 ms (deactivated)

#### 5-6-5. Inter-character Interval Time



Sets the Interval Time between one character and the next within each packet of data.

Configuration Method:

Choose one, then click  OK to transfer the parameter value to the AS10.

Default setting: 0 ms

## 5-7. Data Terminator

Sets the terminator symbol used when uploading AS10's data to the Host-PC. It can be 1 or 2 Bytes depending on the Communication Interface.

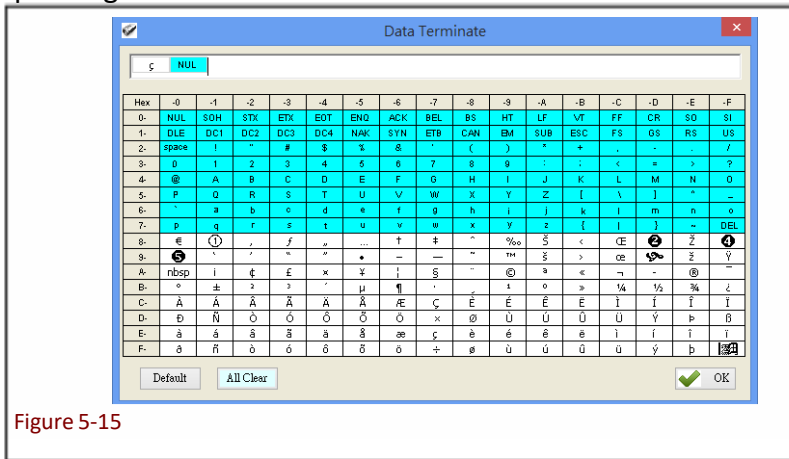


Figure 5-15

Configuration Method:

Choose or type in a symbol using the special keyboard shown in Figure 4.14. Show 1 or 2 Bytes. When sure, click  OK to transfer the parameter value to AS10.

(1) Data Terminator of USB-HID / BT-HID interface:

Default:  (<0xE7><0x00>). Totals 2 Bytes

(2) Data Terminator of USB-VCP / BT-SPP interface:

Default:  (<0x0D><0x0A>). Totals 2 Bytes

## 5-8. Sleep Mode / Timer

Sets the activation status for Sleep Mode and the Timer value used for entering Sleep Mode. The MR10A7 will enter Sleep mode to conserve power if there is no successful Tag scan within a set amount of time.

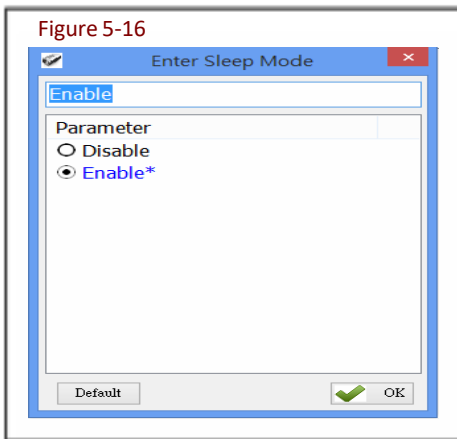


Figure 5-16

### 5-8-1. Enter Sleep Mode

Sets whether to activate Sleep Mode.

Configuration Method:

Choose one, then click  OK to transfer the parameter setting to the AS10.

Default setting: Enable (activate)

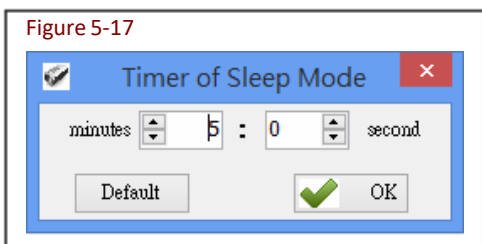


Figure 5-17

### 5-8-2. Timer of Sleep Mode

Sets the waiting time for entering Sleep Mode.

Configuration Method:

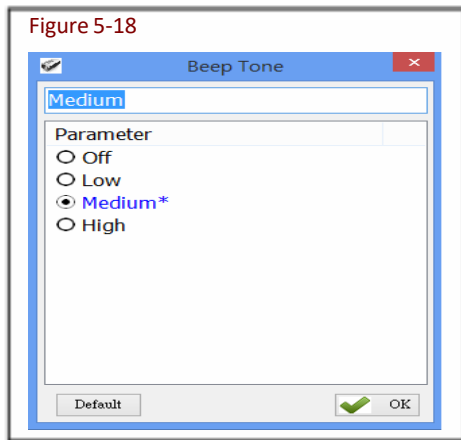
Choose a value (range 00:10 ~ 60:00 mm:ss), then click  OK to transfer the parameter value to the AS10.

Default setting: 05:00

## 5-9. Buzzer

Beep tones serve as an indication of operation status. One short beep signifies a Good Read within a Scan Session; 3 short beeps warn of an error.

### 5-9-1. Beep Tone



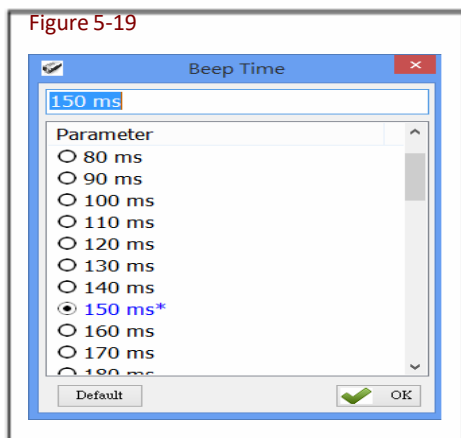
Sets the beep volume or disables beeping.

Configuration Method:

Choose one, then click  OK to transfer the parameter setting to the AS10.

Default setting: Medium

### 5-9-2. Beep Time



Sets the beep length for the short beep used to signify a Good Read.

Configuration Method:

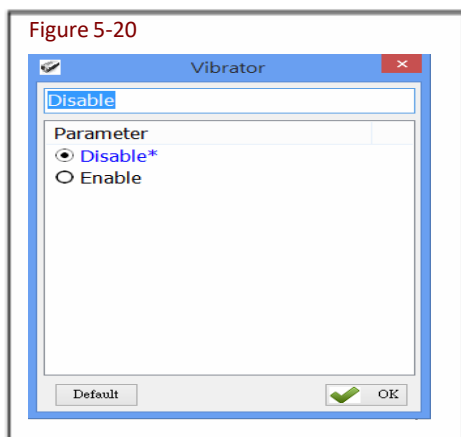
Choose a value between 50 ~ 500 ms, using 10 ms intervals.

When confirmed, click  OK to transfer the parameter value to the AS10.

Default setting: 150 ms

## 5-10. Vibrator

Sets whether to activate the Vibrator, which may be used to signify a Good Read during a Scan Session.



Configuration Method:

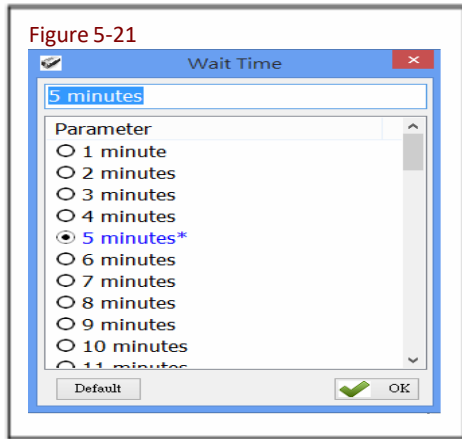
Choose one of the options, then click  OK to transfer the parameter setting to the AS10.

Default setting: Disable (deactivated)

**\*Note:** The duration of vibration is fixed at 200 ms.

## 5-11. Waiting Time

Sets the waiting time used prior to automatically exiting AS10's Configuration Mode.



When the AS10 is in Configuration Mode, if there are no communication instructions between it and the Host PC within a Waiting Time, it will automatically exit Configuration Mode and return to Normal Operation Mode. Or, while within Waiting Time, if the MR10A7's Function button is pressed, followed by the Trigger button, and both buttons are held for about 5 seconds, it will also exit Configuration Mode.

**Configuration Method:**

Select a value between 1 ~ 60 minutes, using 1 minute intervals. When confirmed, click  OK to transfer the parameter value to the AS10.

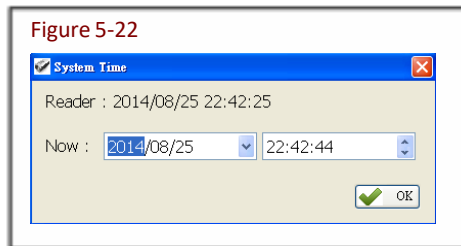
Default setting: 5 minutes

## 5-12. System Time

Sets the AS10's System Time

Date format: Year (4 digits), Month (2 digits), Date (2 digits). e.g. Date: 2014/12/19

Time format: Hour (2 digits), Minute (2 digits), Second (2 digits). e.g. Time: 09:50:30



**Configuration Method:**

Input the Year, Month, Day, Hour, Minute, Second within their respective value ranges. When confirmed, click  OK to transfer the parameter values to the AS10.

Default: Synchronized as Host-PC's System Time

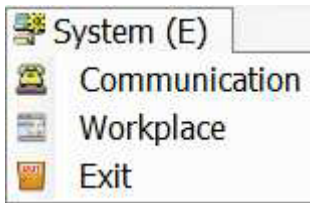
## 6. Additional Functions



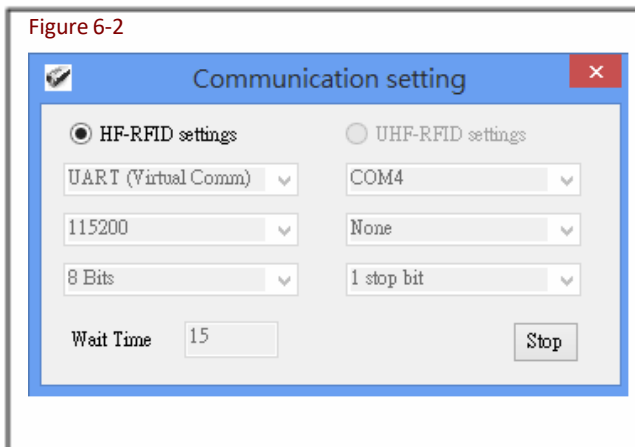
Figure 6-1 : RFID Utility's Additional Functions

Arkscan RFID Utility's additional functions include System, Operation and Tools, as below:

### 6-1. System



<A> Communication: When connected, you may press “Stop” to get disconnected and change COM port and initiate another connection.



**CAUTION !** When terminating a connection, the system will force AS10 to terminate the configuration process.

<B> Workplace: Functions such as Reset to Default Window, Window Size, Fonts ...etc, are configurable in the Workplace Window.

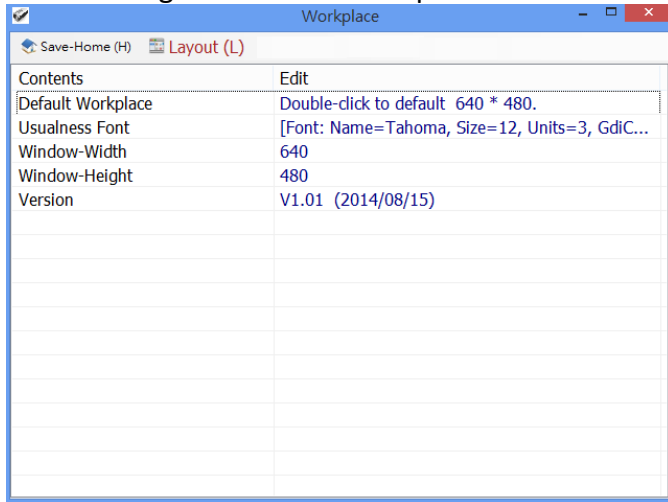


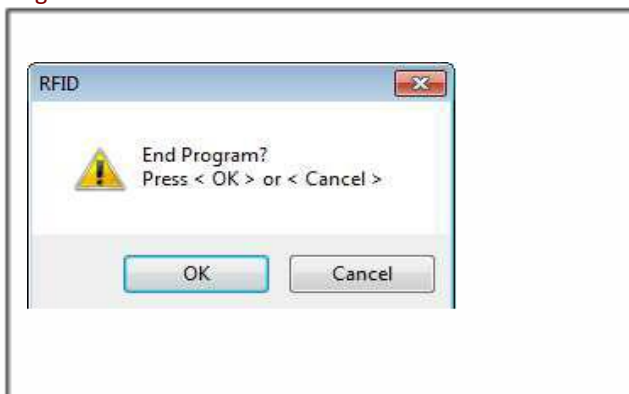
Figure 6-3

In the lower part of selection window, choose the item you wish to adjust, then double click on it with your mouse or press the *ENTER* key to start adjusting.

- 1) Default Workplace: Restores all defaults, including window size, font style, font size, etc.
- 2) Usualness Font: Mostly used for adjusting fonts for the Main Menu. The user determines its use.
- 3) Window-Width, Height: Adjusts window size only for the Main Window.

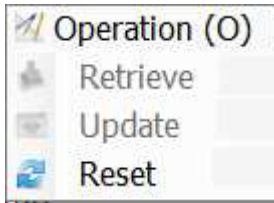
<C> Exit: When exiting the Arkscan RFID Utility, the system will ask whether to terminate all configuration operation.

Figure 6-4



**CAUTION !** When exiting from the Arkscan RFID Utility is confirmed, the system will instruct the AS10 to terminate the configuration process.

## 6-2. Operation



<A> Retrieve: Read parameter values from the connected AS10.

Update: Upload the currently set parameter values.

Only when connected to an AS10 may Retrieve and Update be used.

<B>  Reset: Restore all parameters to their Default settings.

< i > When the **AS10** is connected to the **Host-PC**

Can restore all parameter values for the current Settings window to their previous states (Undo All Changes), restore them to their factory Default settings (Reset Parameters to Default), or restore all parameters inside the AS10 to their factory Default settings (Reset **Reader's** Parameter to Default).

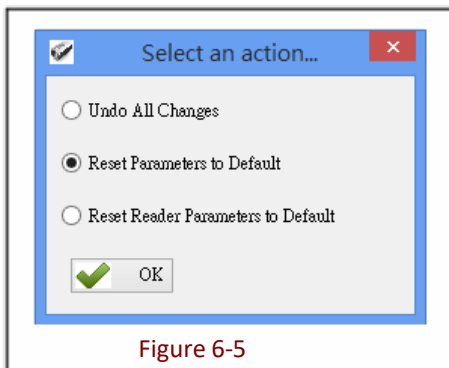


Figure 6-5

< ii > When the **AS10** is disconnected from the **Host-PC**

Can restore all parameter values for the current Settings window to their previous states (Undo All Changes), or restore them to their factory Default settings (Reset Parameters to Default).

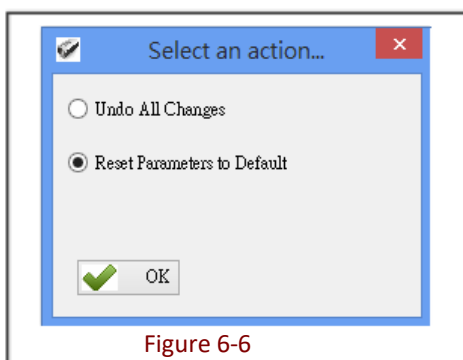


Figure 6-6

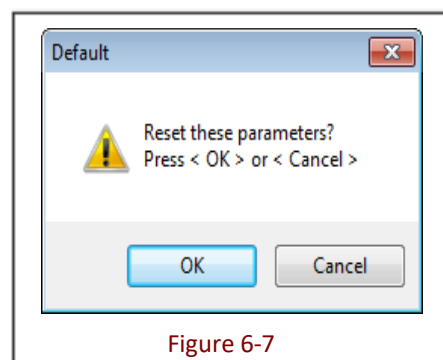
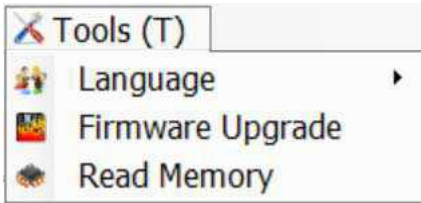


Figure 6-7

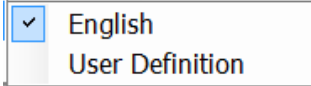
The System will ask whether to confirm execution, as per Figure 6-7.




## 6-3. Tools



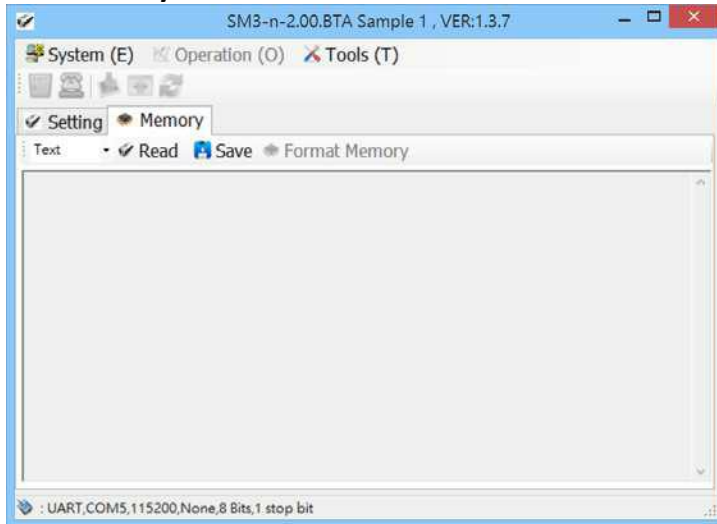
<A>  Language: Sets the display language.




<B>  Firmware Upgrade: Updates firmware on the AS10. Please refer to **7. Updating Firmware on AS10**.

<C> Read Memory: To retrieve the stored data on the AS10 through the RFID Utility. Please refer to **6-3-1. Memory**.

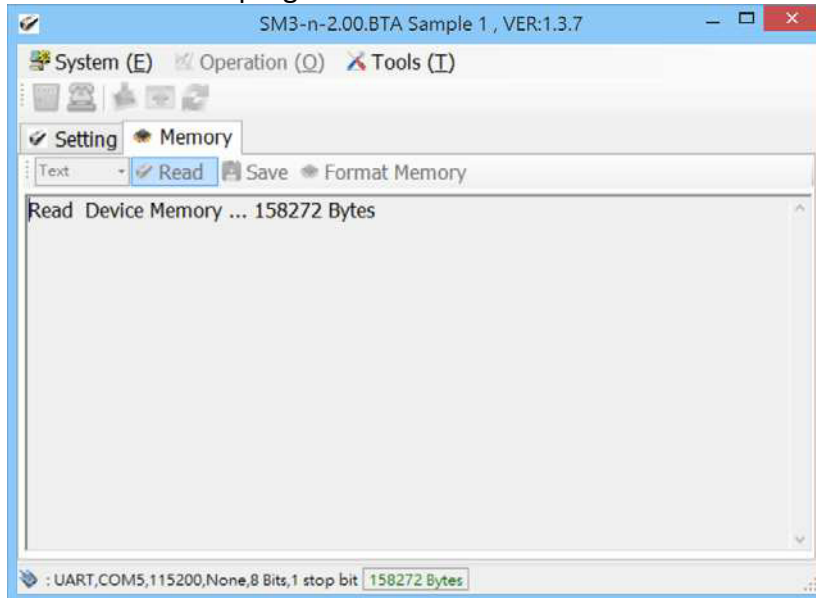
### 6-3-1. Memory



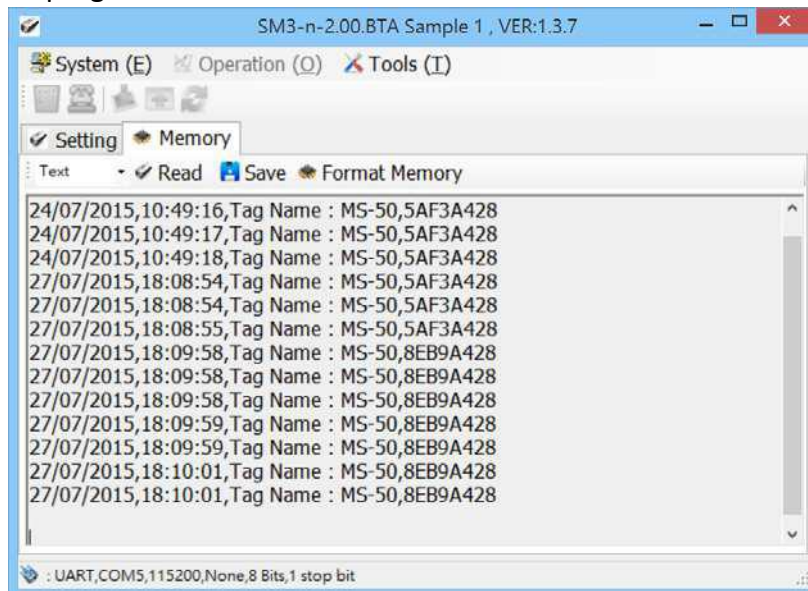
< i > Select the desired output data format: "Hex" or "Text".  
Or click  Read with "Text" as the default data format.



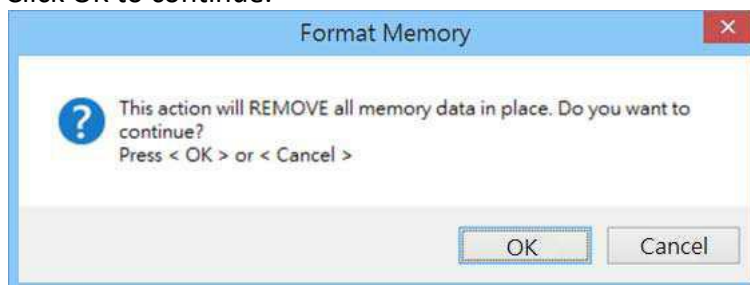
< ii > Wait for the program to retrieve all the data from AS10.



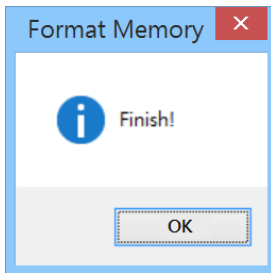
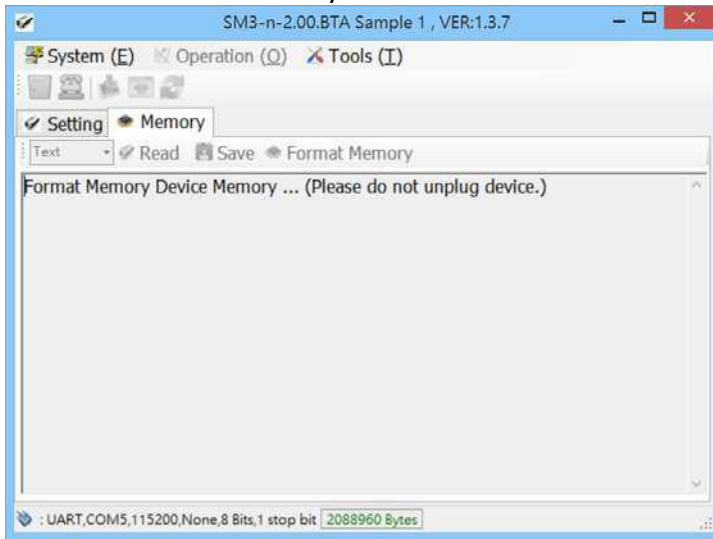
< iii > When the program has finished retrieving the data, the data will be displayed on program's window. Click **Save** to save the data as a New Text File.



< iv > If you want to format the memory on AS10, please click **Format Memory**. A pop-up window will appear and warn that this will remove all the memory data. Click OK to continue.



< v > While the utility is formatting the memory, DO NOT unplug the AS10. Once the formatting process is completed, a “finish!” pop-up window will appear, and the AS10 will automatically terminate the configuration mode and disconnect itself from the RFID Utility.



## 7. Updating Firmware on AS10

### 7-1. Entering Firmware Update Mode

Under normal circumstances, the AS10 boots into the Normal Operation Mode. The following steps will move the AS10 to Firmware Update Mode and connect it to the Host PC's RFID Utility, to facilitate firmware upgrade through USB Virtual COM communication. Steps are as follow:

#### Step1:

Make sure that the AS10 is disconnected from the Host-PC.

Connect the AS10 to the Host PC using the Micro USB Cable.

#### Step 2:

Press the Function button and the Trigger button on the AS10, as per Figure 7-1. Hold both buttons, do not release, and use a pin or a straightened paperclip to press the Reset button on the bottom, as per Figure 7-2. The AS10 will enter the Firmware Update Mode.

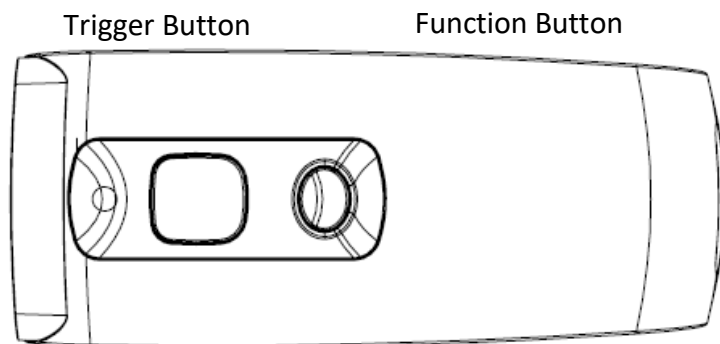


Figure 7-1: Press both buttons on the AS10 simultaneously.

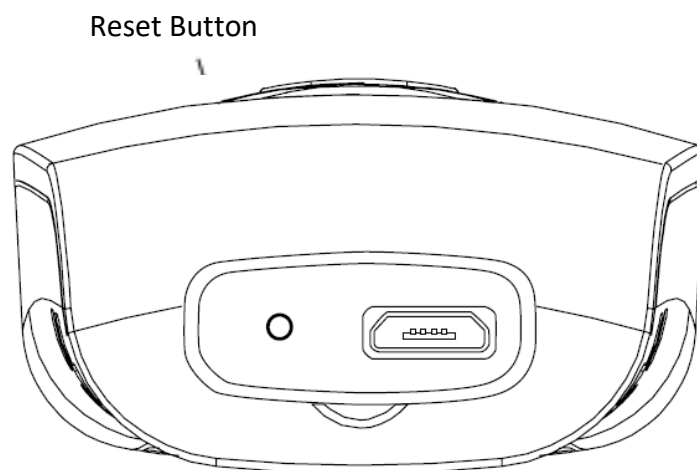


Figure 7-2: Press the Reset button

#### Step 3:

Still holding down the Function button and Trigger button, check the Device Manager on the Host PC to see if a USB Virtual COM has appeared, as per Figure 7-3. Now release the Function button and the Trigger button. The AS10 will automatically change its Communication Interface to USB Virtual COM.




Figure 7-3: Check the Host-PC to see if it has detected the USB Virtual COM.

## 7-2. Executing Firmware Update

### Step 1:



Execute the **RFID Utility.exe** program. **Do not establish a connection.**

Press  to cancel the connection process and enter the program, as per Figure 7-4.

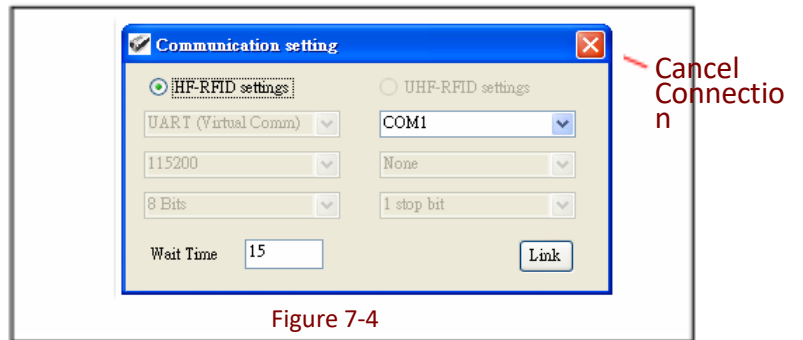




Figure 7-4

### Step 2:

Choose  **Tools (T)** and execute  **Firmware Upgrade**  
Please refer to **6-3. Tools**

### Step 3

Choose the COM port, as per Figure 7-5.

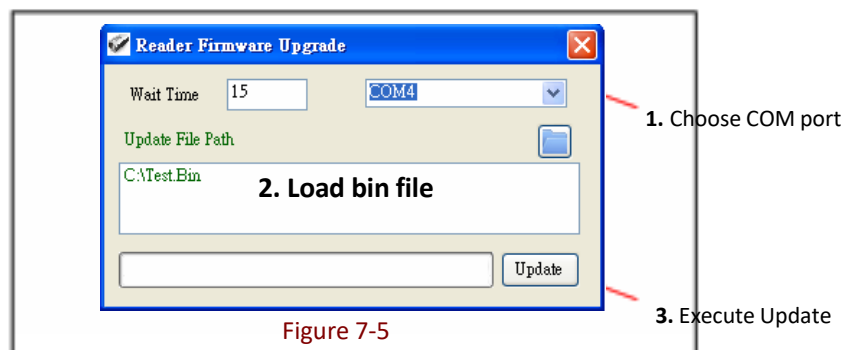

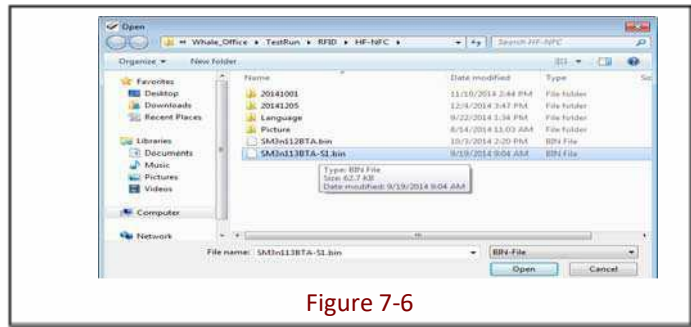



Figure 7-5

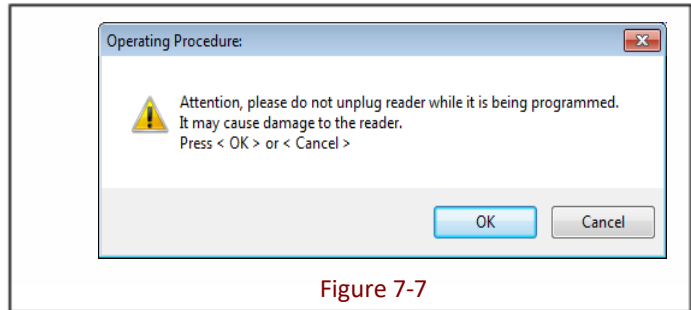
**Step 4:**

Load  the bin file, as per Figures 7-5 and 7-6.

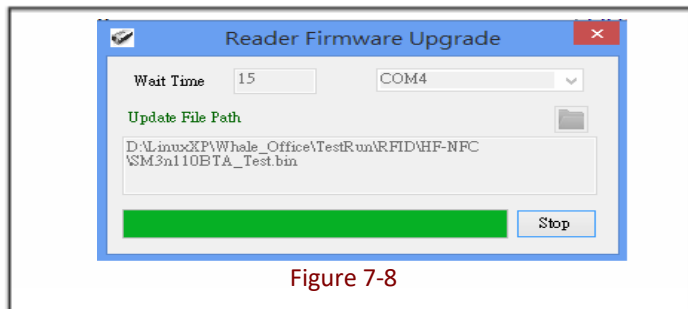


**Step 5:**

Click  to execute firmware upgrade, as per Figure 7-5. The system will ask whether to confirm execution.



**CAUTION !** While the AS10 is updating its firmware (Figure 7-8), please avoid unnecessary errors and do not unplug the cable. Incomplete firmware update may cause damage to unit.



**Step 6:**

When update is complete, click "OK" to finish the update program, as per Figure 7-9. The AS10 will reboot and return to Normal Operation Mode.

